



PRODUCT CATALOG



SAMUEL JACKSON

TECHNICAL STAFF & NETWORK

Access to the largest cotton moisture technical staff in the world is one call away.



Will Gruben



Bogdan "Bo" Duda



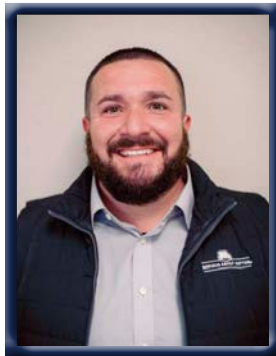
Serge Saurel



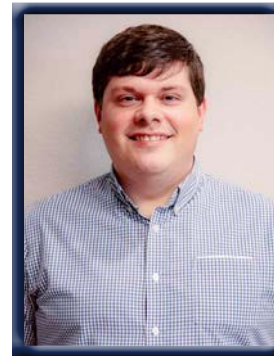
Casey Newsom



Jeremy Osborne



Albert "Birdie" Perez



Jeff Sallee



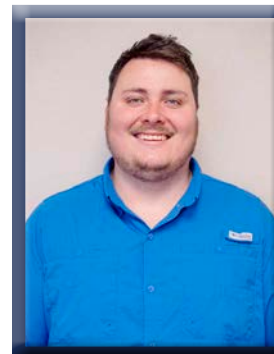
Andrew Harkey



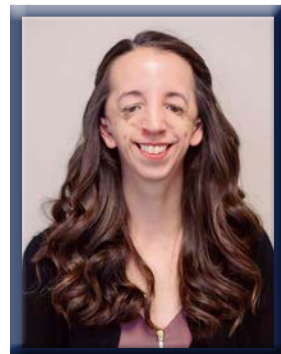
Chris Jackson



Tony Tran



Kalin Clark



Savannah Harkey

OFFICES & AUTHORIZED RESELLERS

Main Office

Lubbock, TX

Toll-Free: 1-800-862-9966

Phone: 806-795-5218

Email: engineering@samjackson.com

Factory/Shipping Address

Samuel Jackson, Inc.

3900 Upland Ave.

Lubbock, TX 79407

Mid-South Office

Indianola, MS

Phone: 662-809-9730

Email: casey@samjackson.com

Abilene Office

Abilene, TX

Phone: 806-686-6339

Email: will@samjackson.com

Australia

Moree, NSW

Phone: (07) 3177 6364

Email: engineering@samjackson.com

Africa Office

Paris, France

Phone: +33 (0)6 23 49 05 15

Email: serge@samjackson.com

A Samuel Jackson Reseller has received special training and offer both new Sam Jackson products and technical support.

Bradberry Services

Smyer, TX

Chris Bradberry

Phone: 806-773-3065

Email: chris@bradberryervices.com

The background features a large, stylized gold shape resembling a mountain or a stylized letter 'A' on a red background. The gold shape has a dark red triangular peak at the top right. The text 'DRYING PRODUCTS' is centered within the gold shape, underlined.

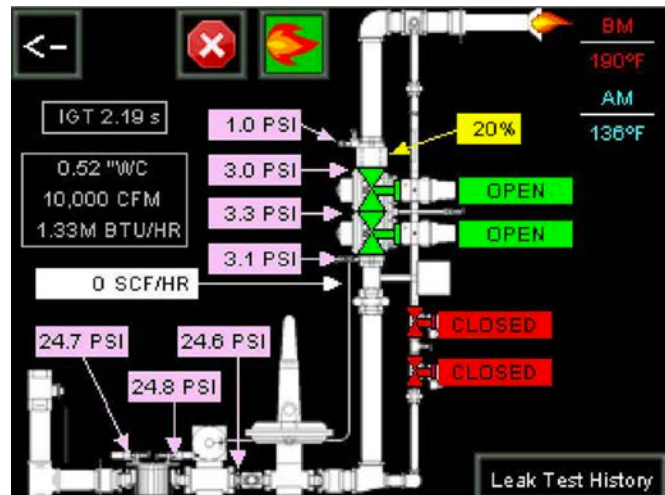
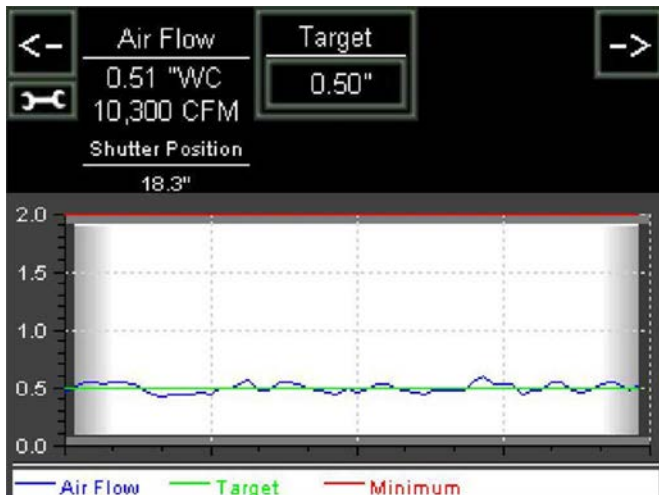
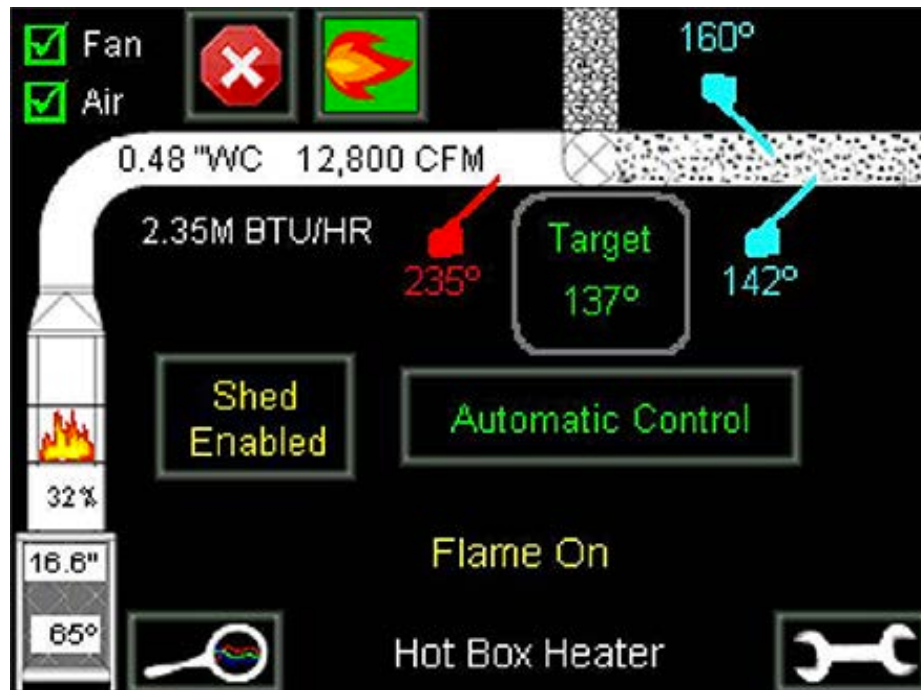
DRYING PRODUCTS

***“A strong drying strategy is your best weapon
to gin challenging cotton.”***

COBALT



COBALT TOUCH SCREEN INTERFACE



Error History			<- p2/10 ->
E618	No fan interlock. Are all fans running?	2018 / 01 / 28	20 : 45 : 42
E603	Burner A failed in operation. Increase Min Fuel Valve During Run	2018 / 01 / 28	20 : 03 : 20
E446	Excessive flame failures.	2018 / 01 / 28	19 : 57 : 22
E603	Burner A failed in operation. Increase Min Fuel Valve During Run	2018 / 01 / 28	05 : 34 : 24
E618	No fan interlock. Are all fans running?	2018 / 01 / 28	03 : 43 : 34



PULL-THROUGH INSTALLATIONS



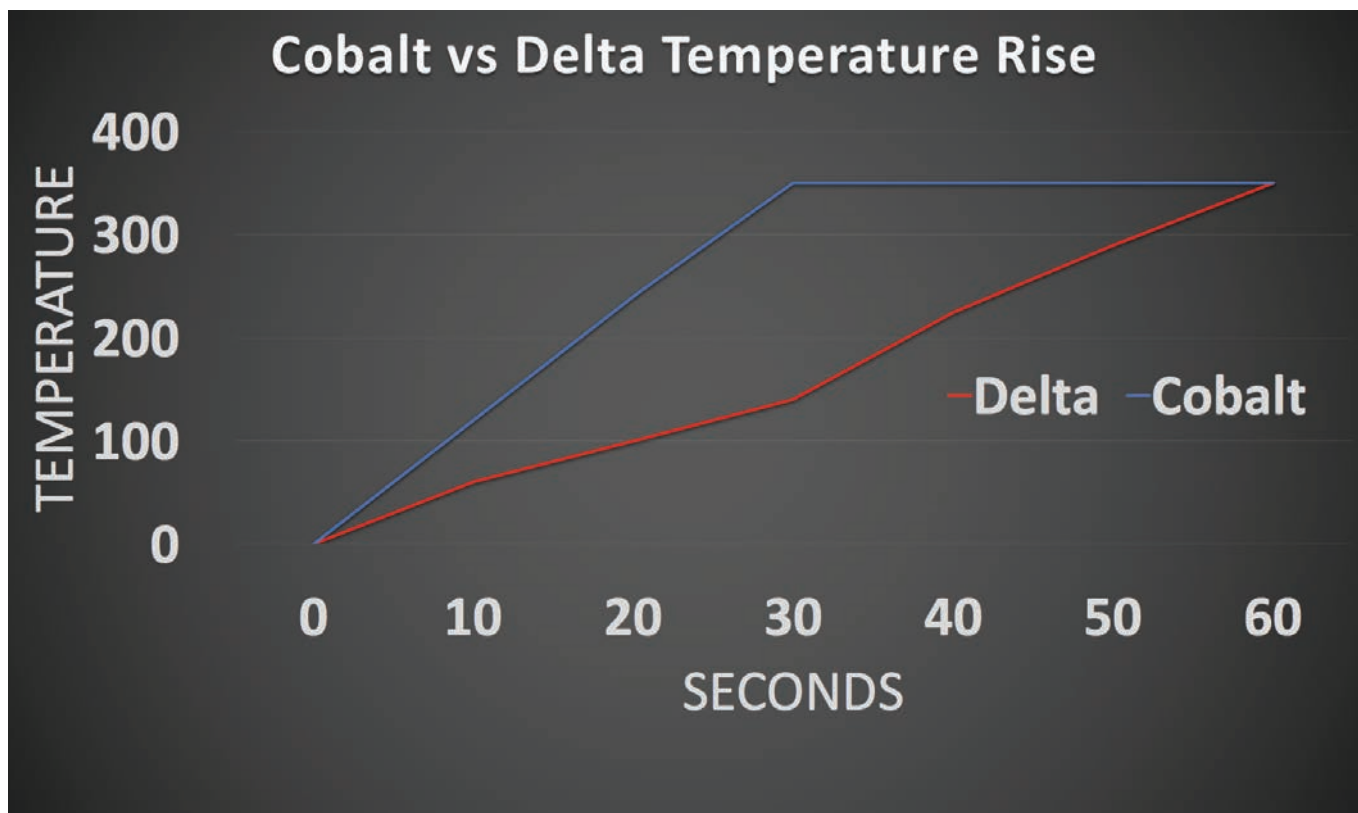
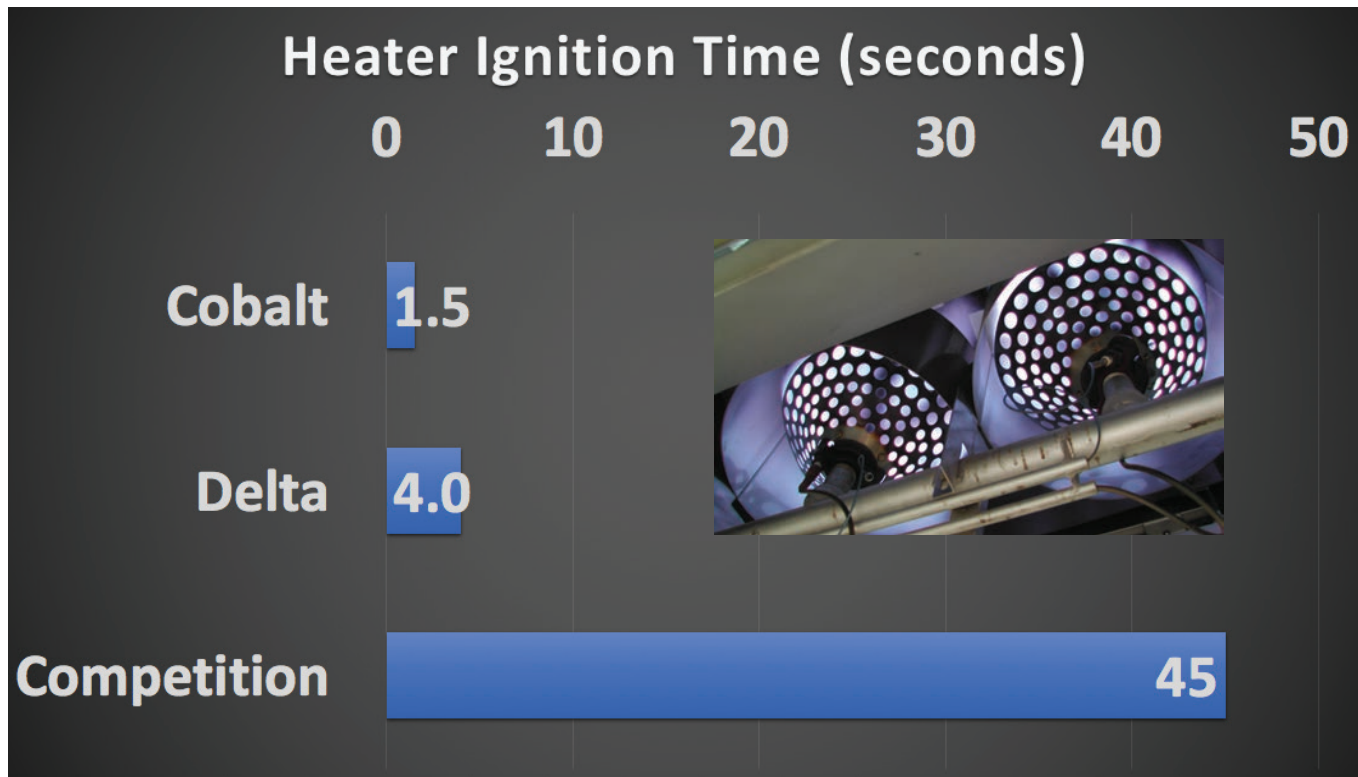
PUSH-PULL INSTALLATIONS



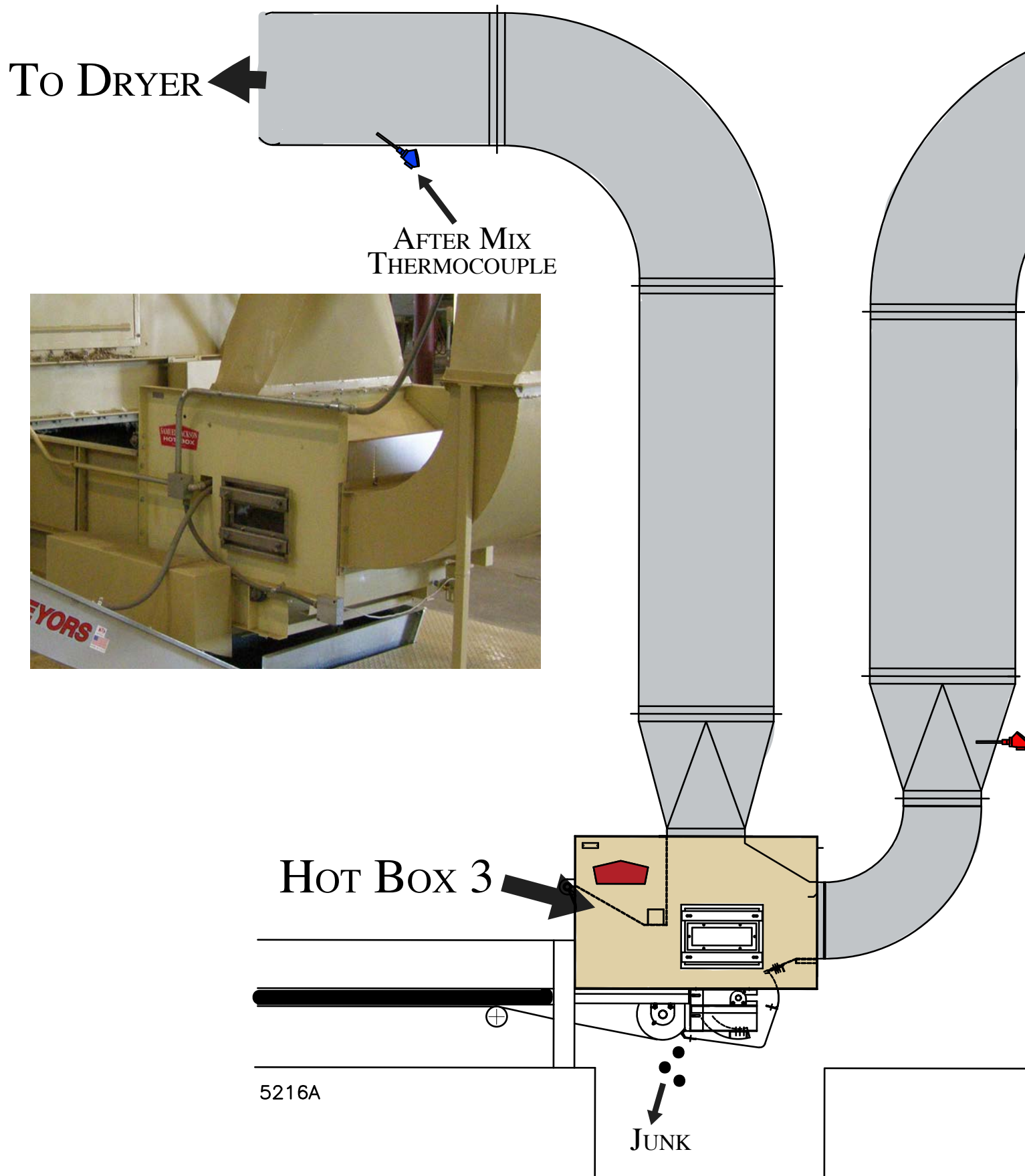
COBALT CONTROL CABINET



COBALT VS. DELTA



Hot Box



Hot Box

- It's a pick-up point.
- It's a dryer.
- It's a junk separator.
- It's a moisture sensor.
- It's a money saver!

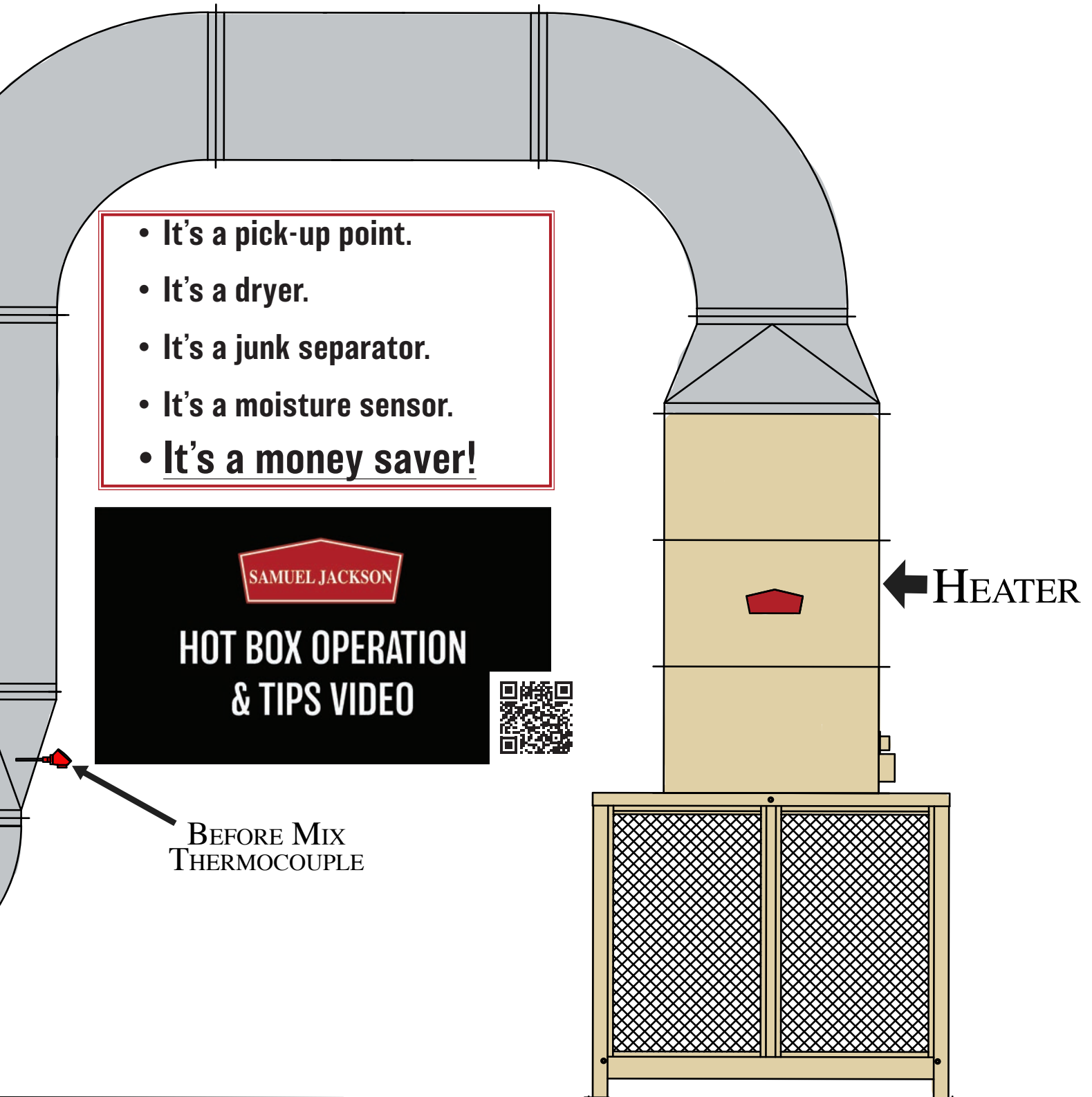


**HOT BOX OPERATION
& TIPS VIDEO**



BEFORE MIX
THERMOCOUPLE

← **HEATER**



DOUBLE FLAIL

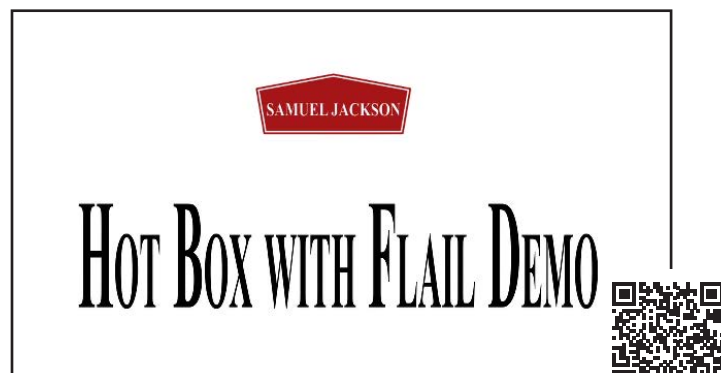
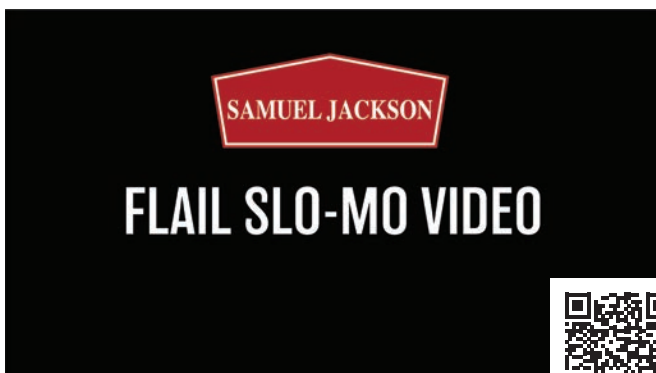
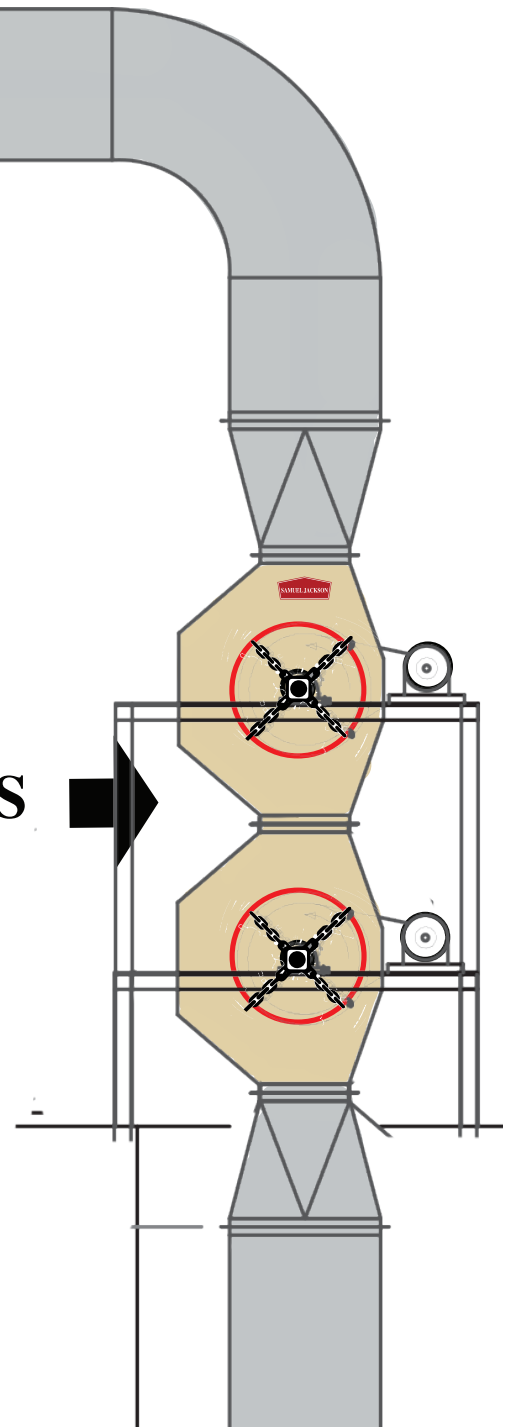


DOUBLE FLAIL



↑
SCOOP DRYER

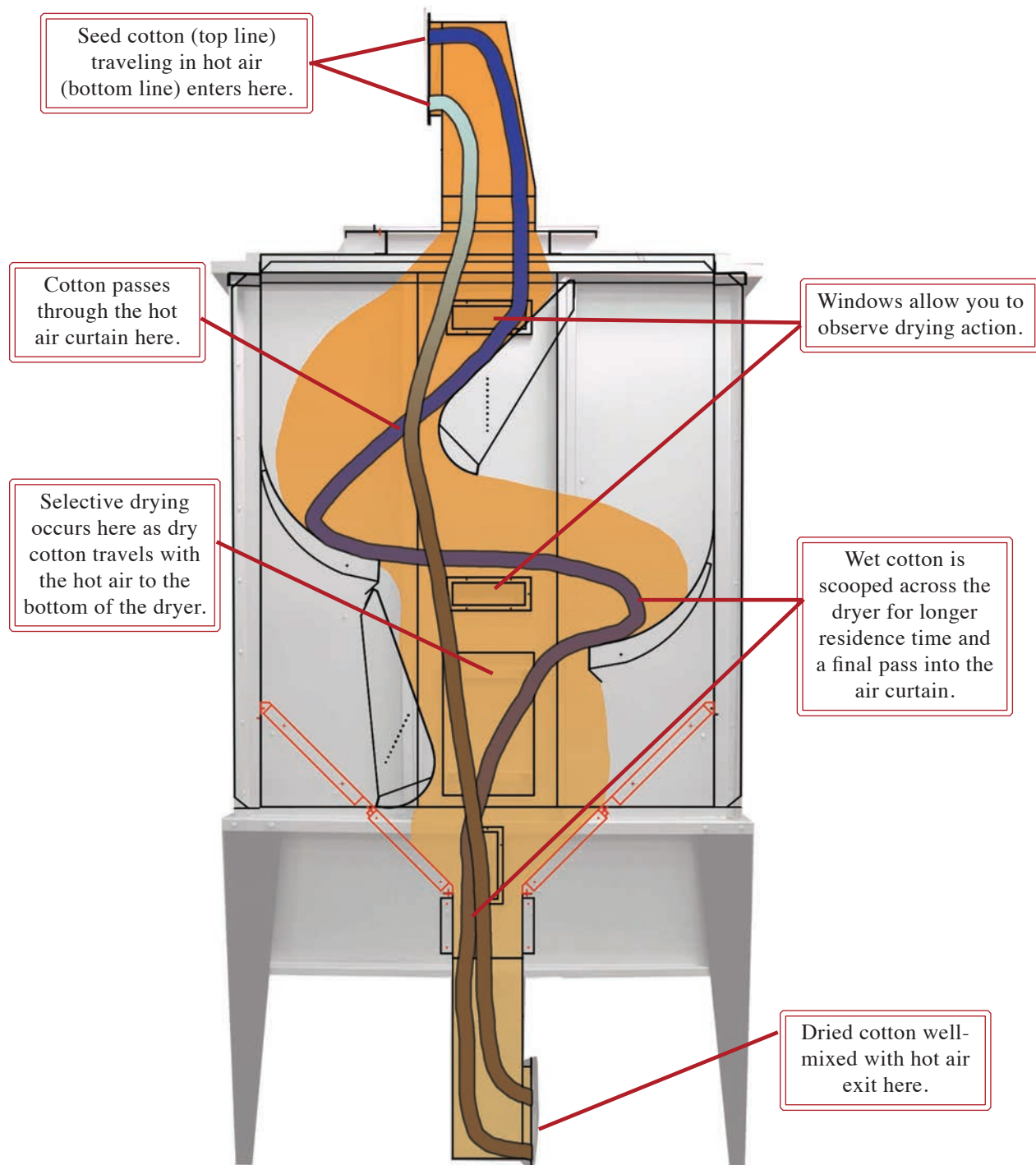
FLAILS →



SCOOP DRYER



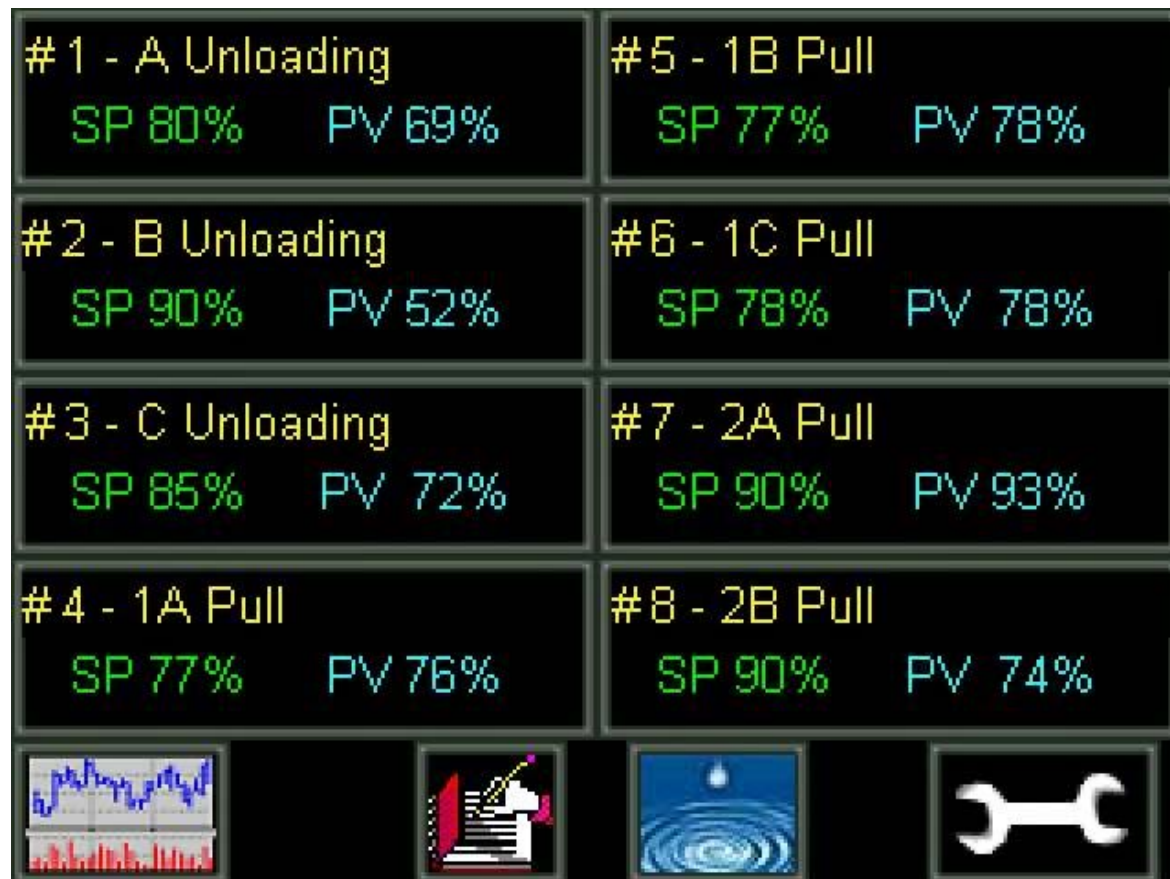
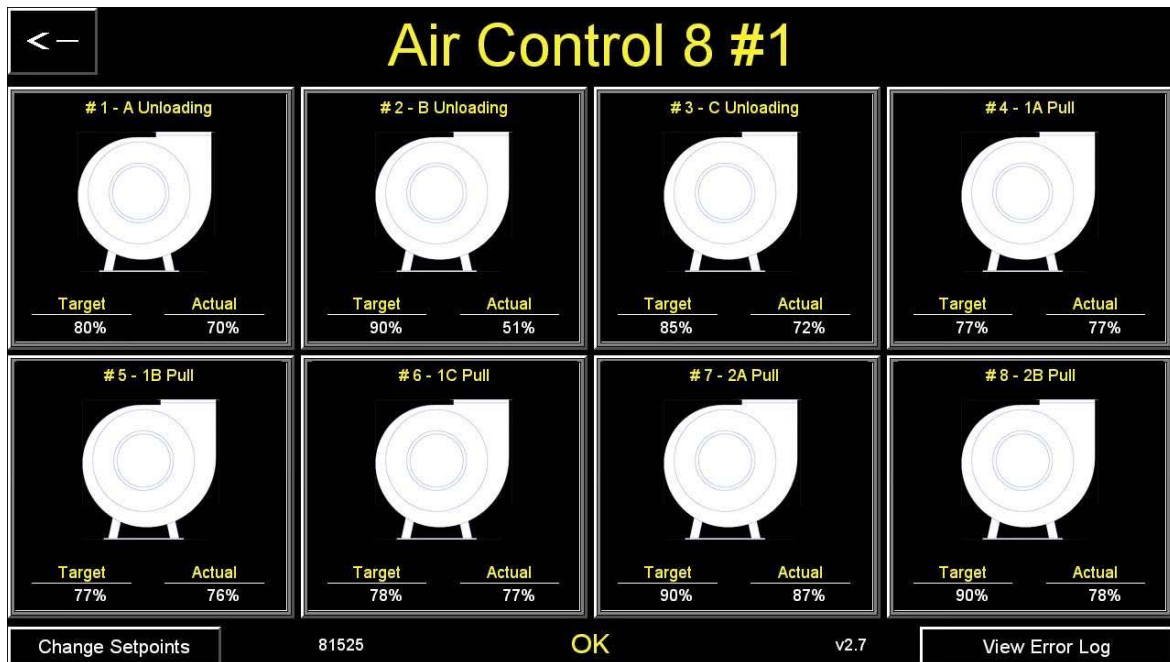
SCOOP DRYER



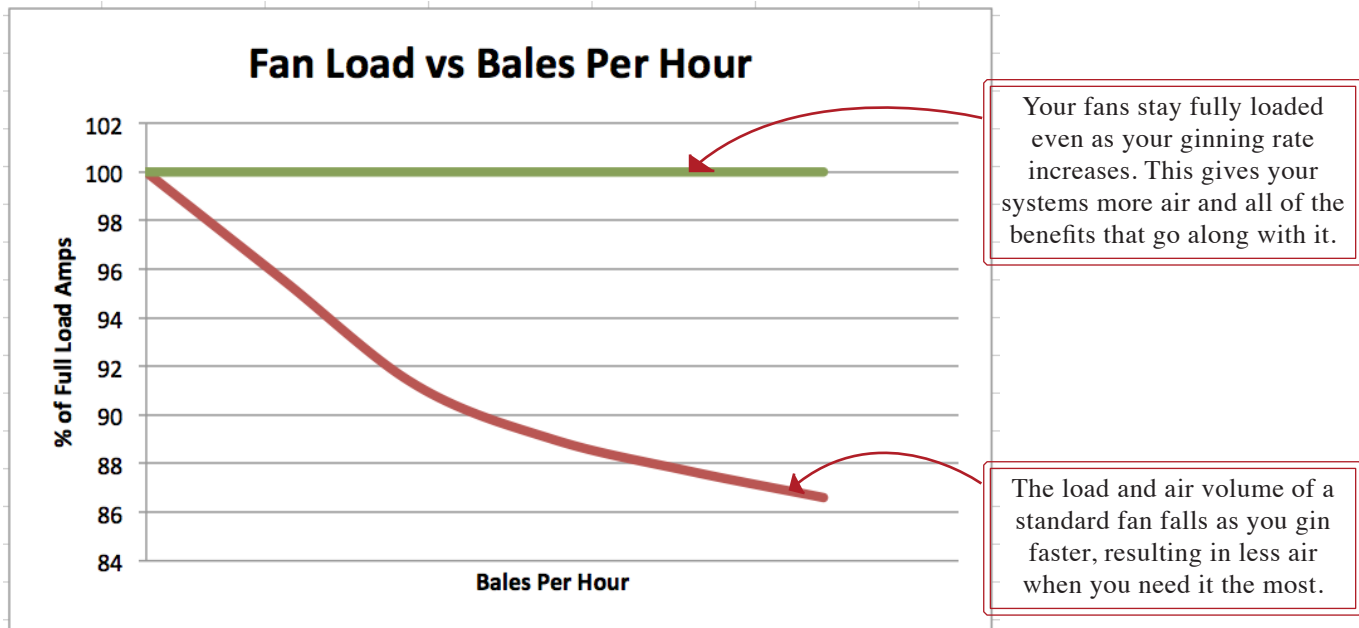
SCOOP DRYER WITH HOT BOX



AIR CONTROL 8



AIR CONTROL 8



Air Control 8 provides:

- 30% more air while ginning
- Better drying, cleaning, conveying
- Reduces over overloading fans

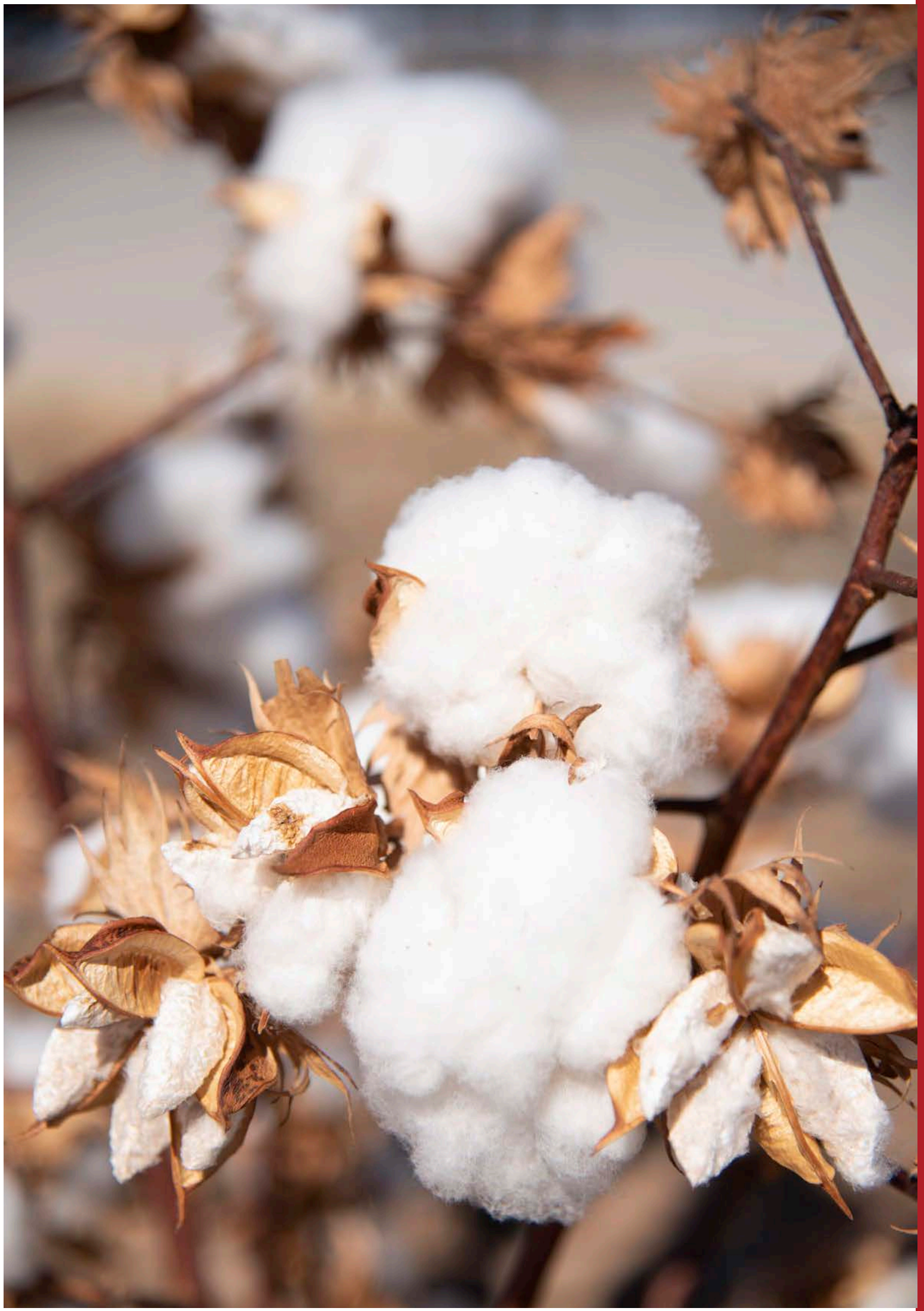


VULCAIN OIL-FIRED HEATER



The Vulcain provides:

- Industrial Grade Burner Package with a 20:1 turndown ratio
- Available in 4 and 7-million Btu models
- Compatible with Shed Technology
- Compatible in pull-through or push-pull drying system
- Simple test program for easy setup and troubleshooting

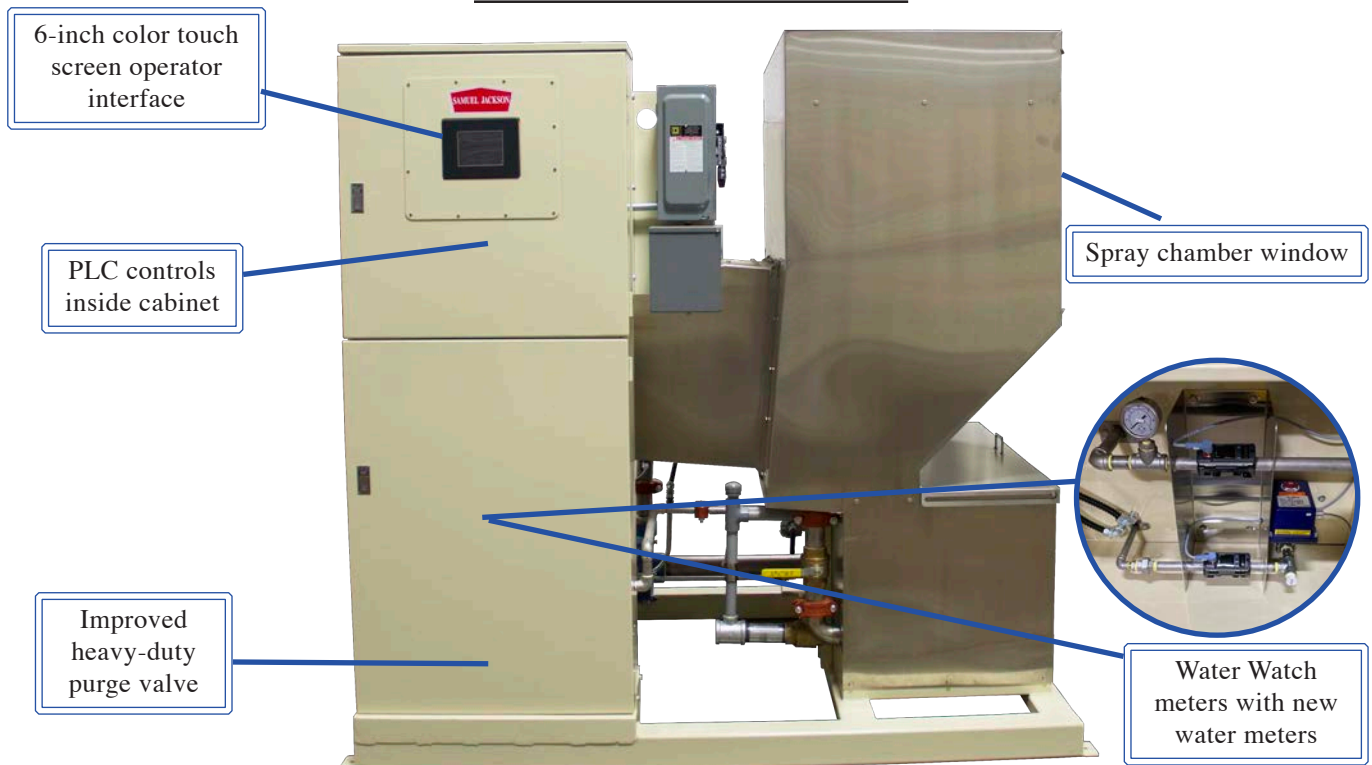




HUMIDIFICATION PRODUCTS

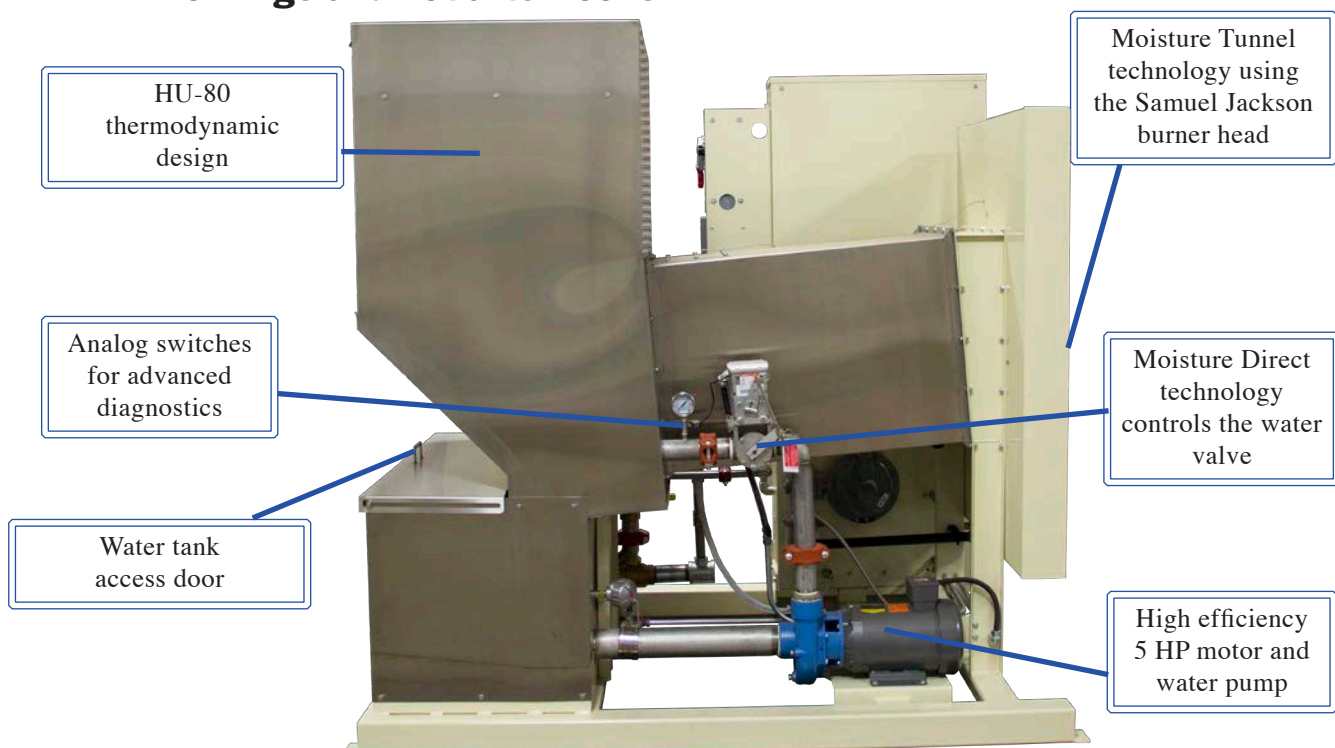
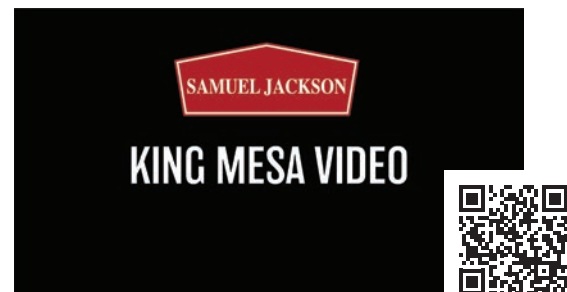
*“Cotton requires the control of moisture
to maximize its value.”*

KING MESA

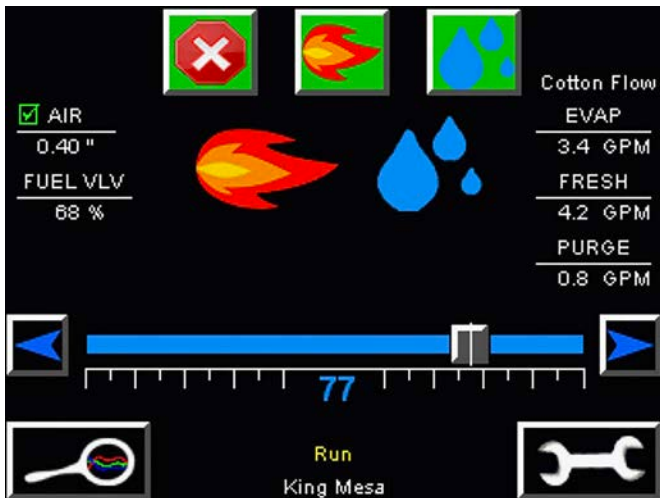


King Mesa features:

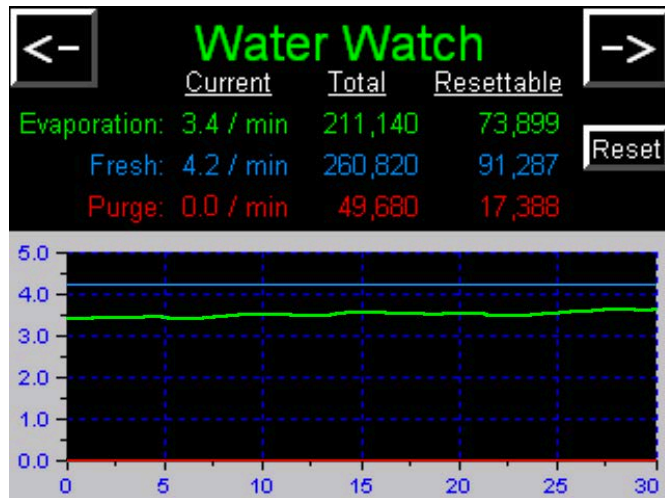
- Can handle 4,000 CFM of air
- Most stable operation for changing conditions
- Wide operating range for cold mornings and hot afternoons



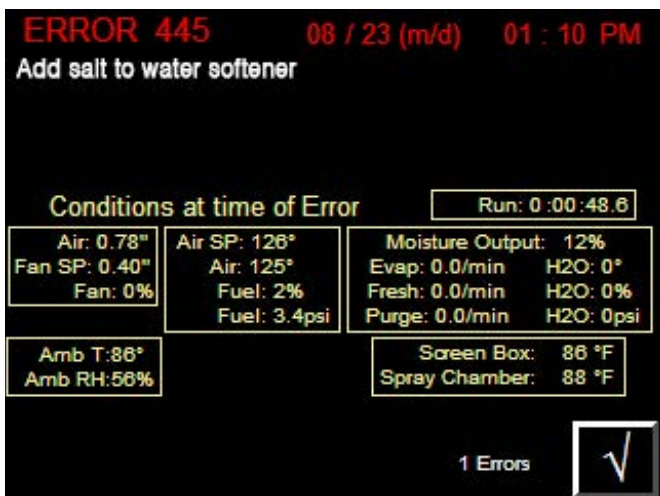
KING MESA CONTROLS



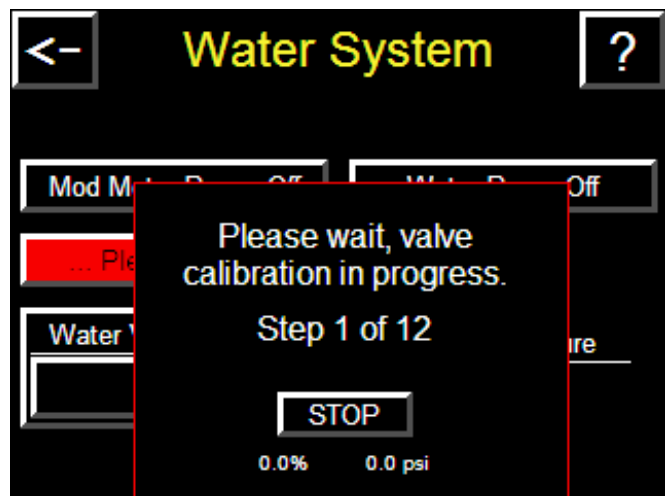
Each Humidaire has its own screen complete with start and stop buttons and operation statistics.



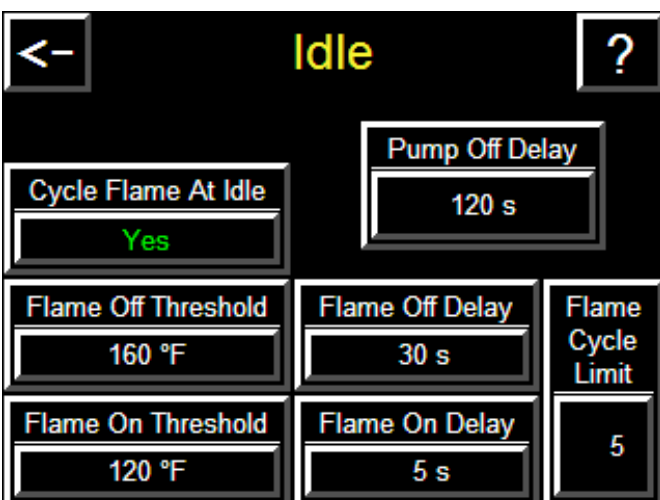
The water graph clearly defines problems.



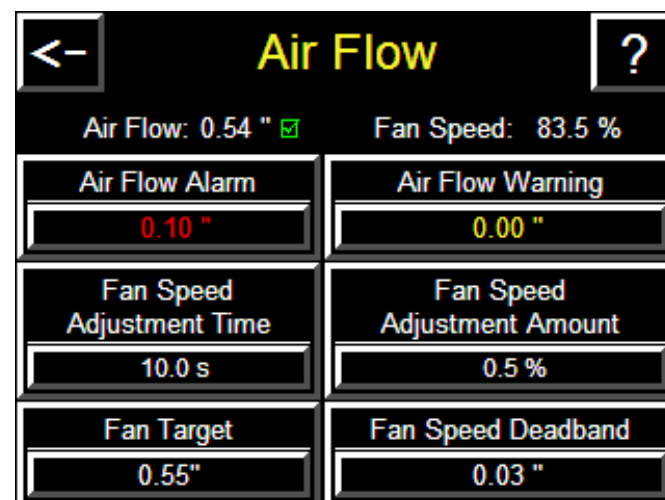
Detailed error reports and log



Auto calibration procedure



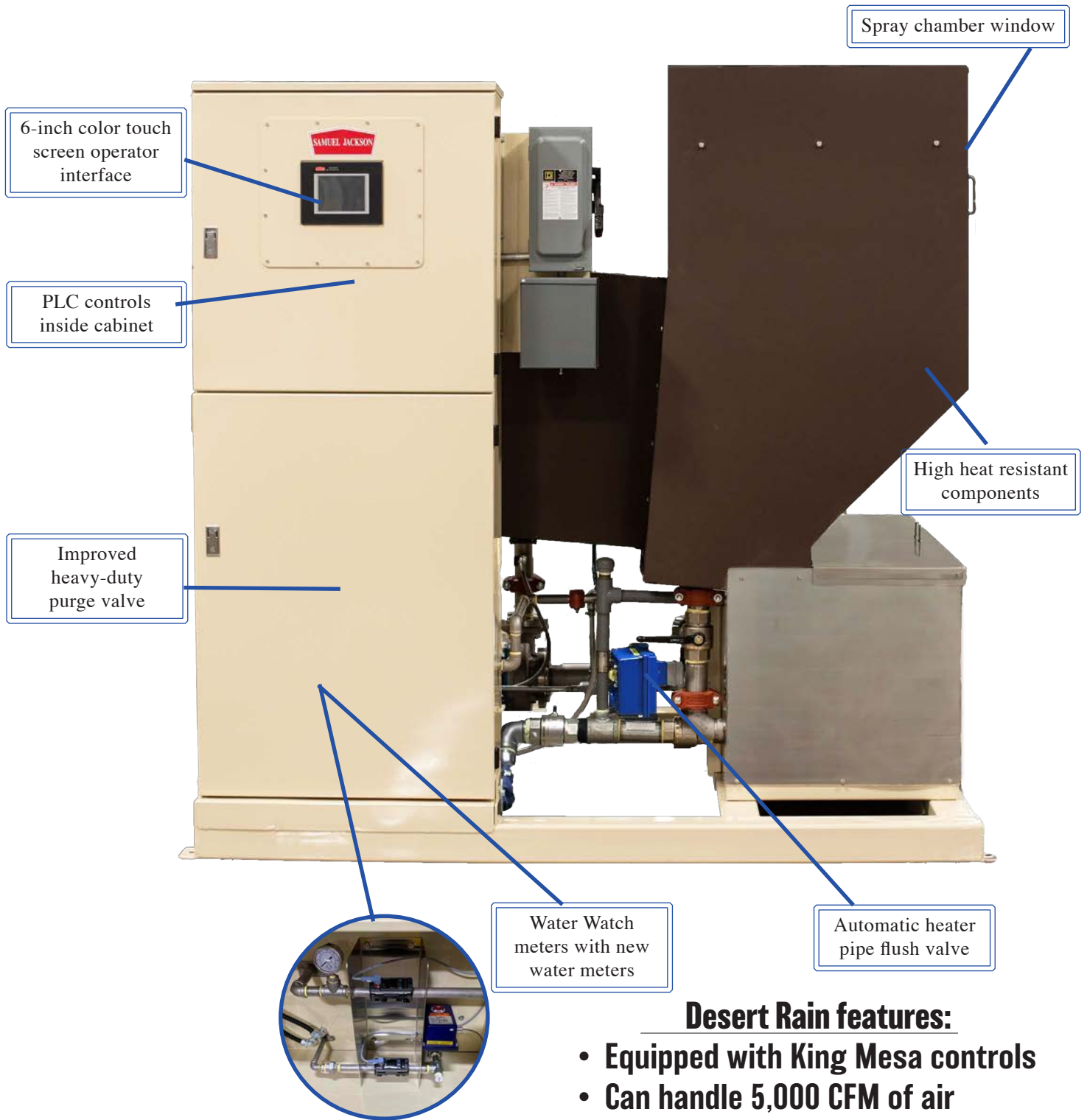
Flame idling



Moist air fan VFD control

DESERT RAIN

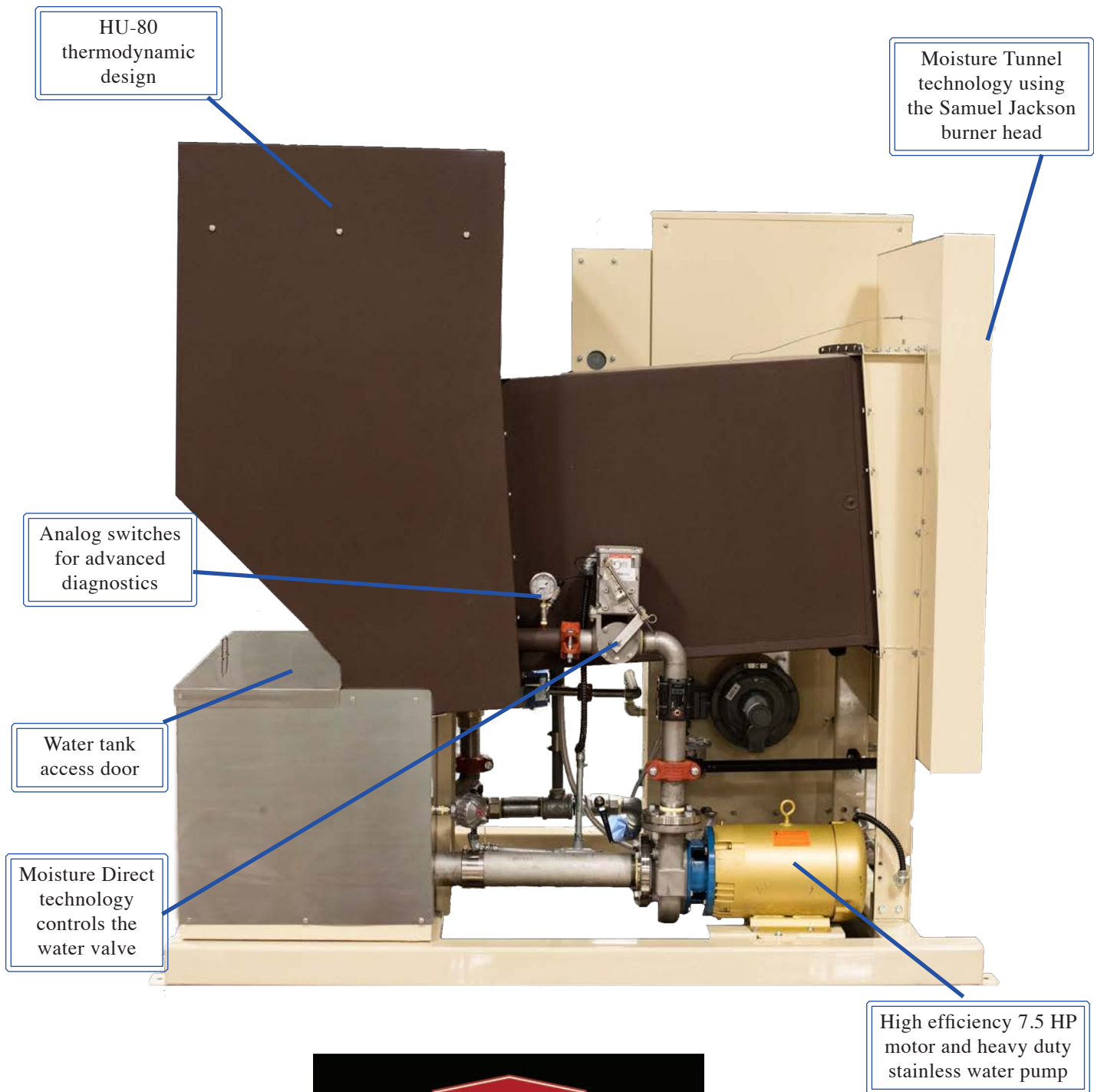
The most powerful Humidaire available.



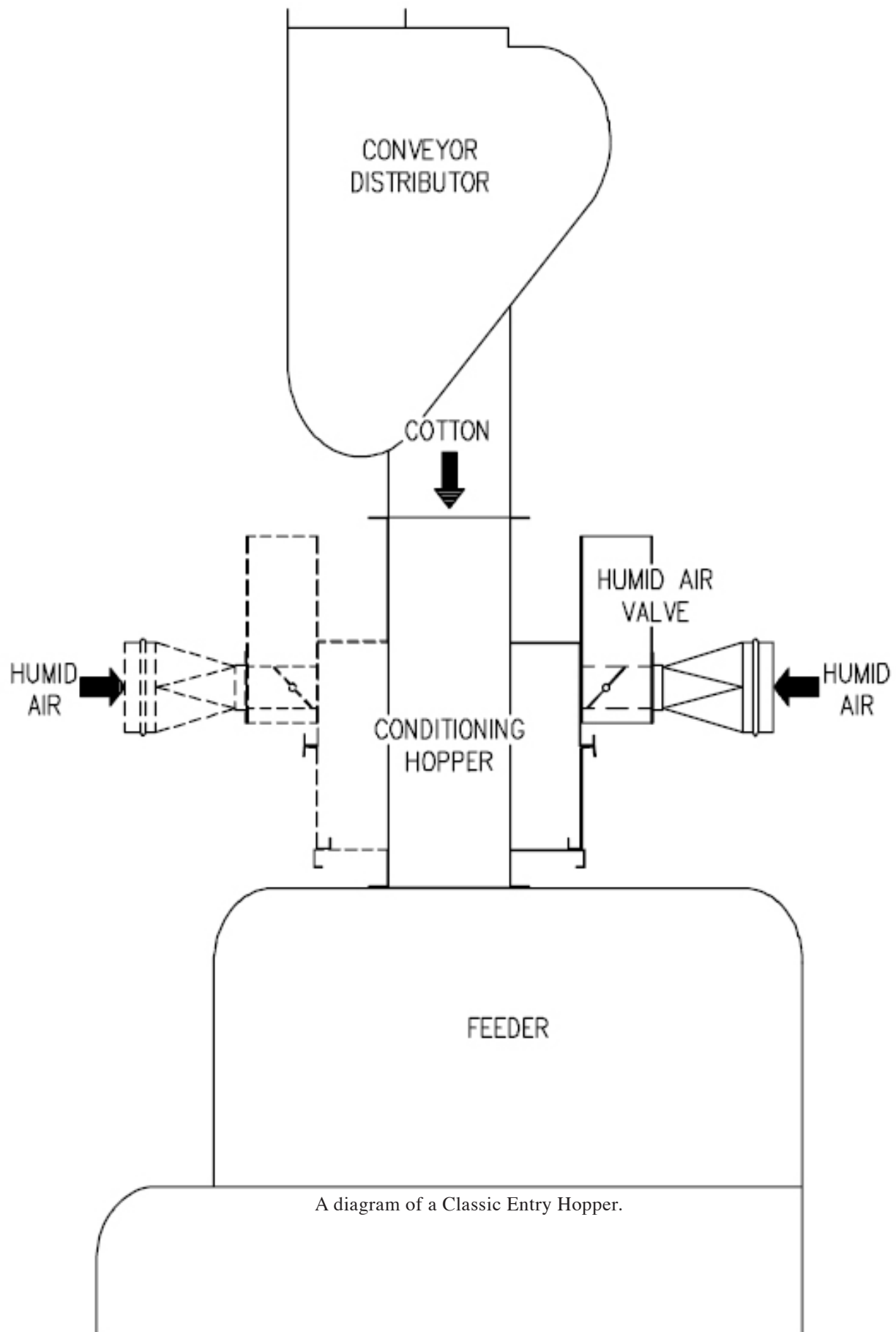
Desert Rain features:

- **Equipped with King Mesa controls**
- **Can handle 5,000 CFM of air**
- **Only compatible with natural gas**

DESERT RAIN



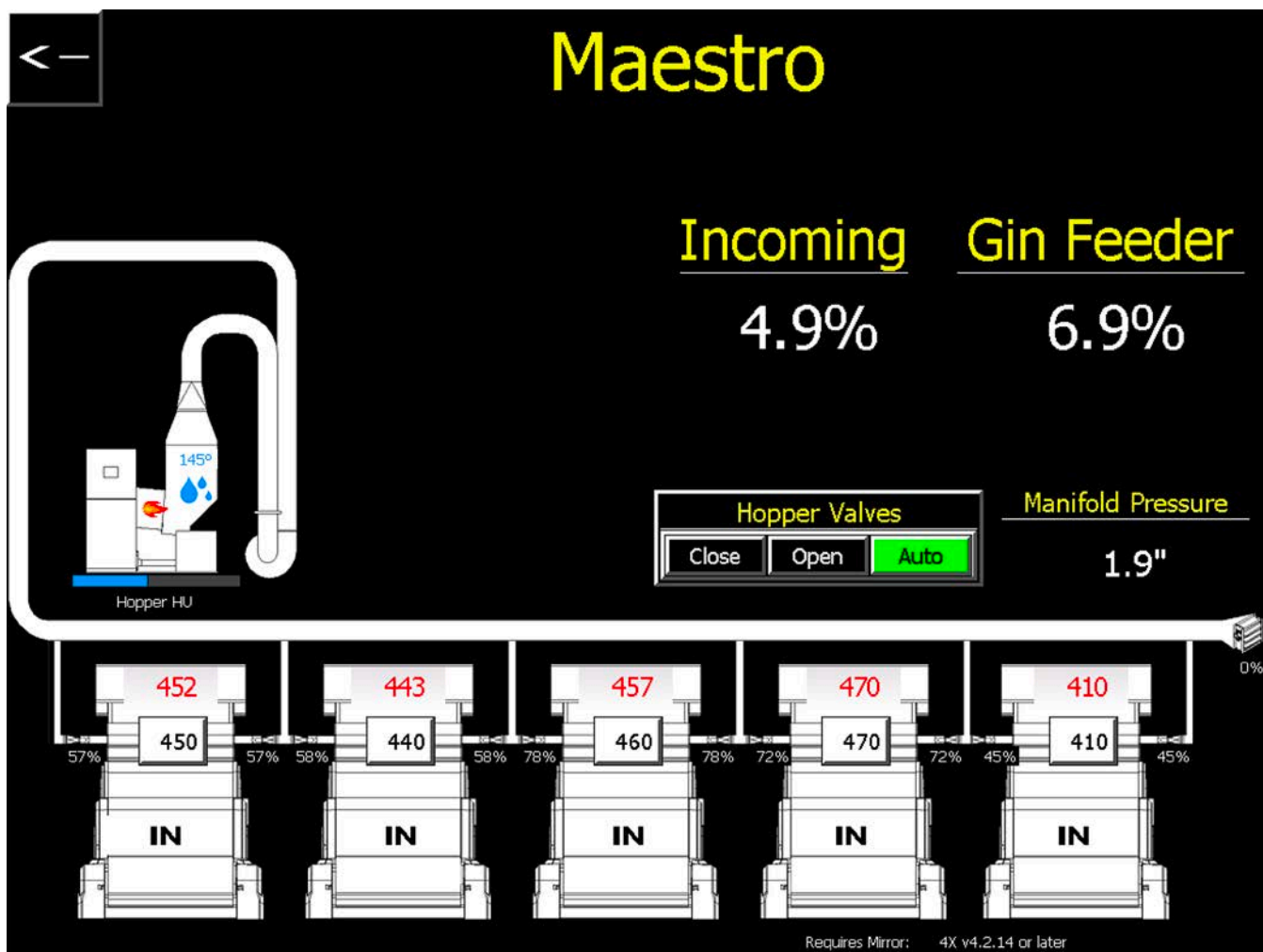
CONDITIONING HOPPERS



CONDITIONING HOPPERS



MAESTRO



Make Your Gin Stand Sing!

Maestro Conditioning Hoppers provide:

- Reduced static from dry cotton
- Preserve cotton fiber length, uniformity, and strength
- Increased gin stand capacity

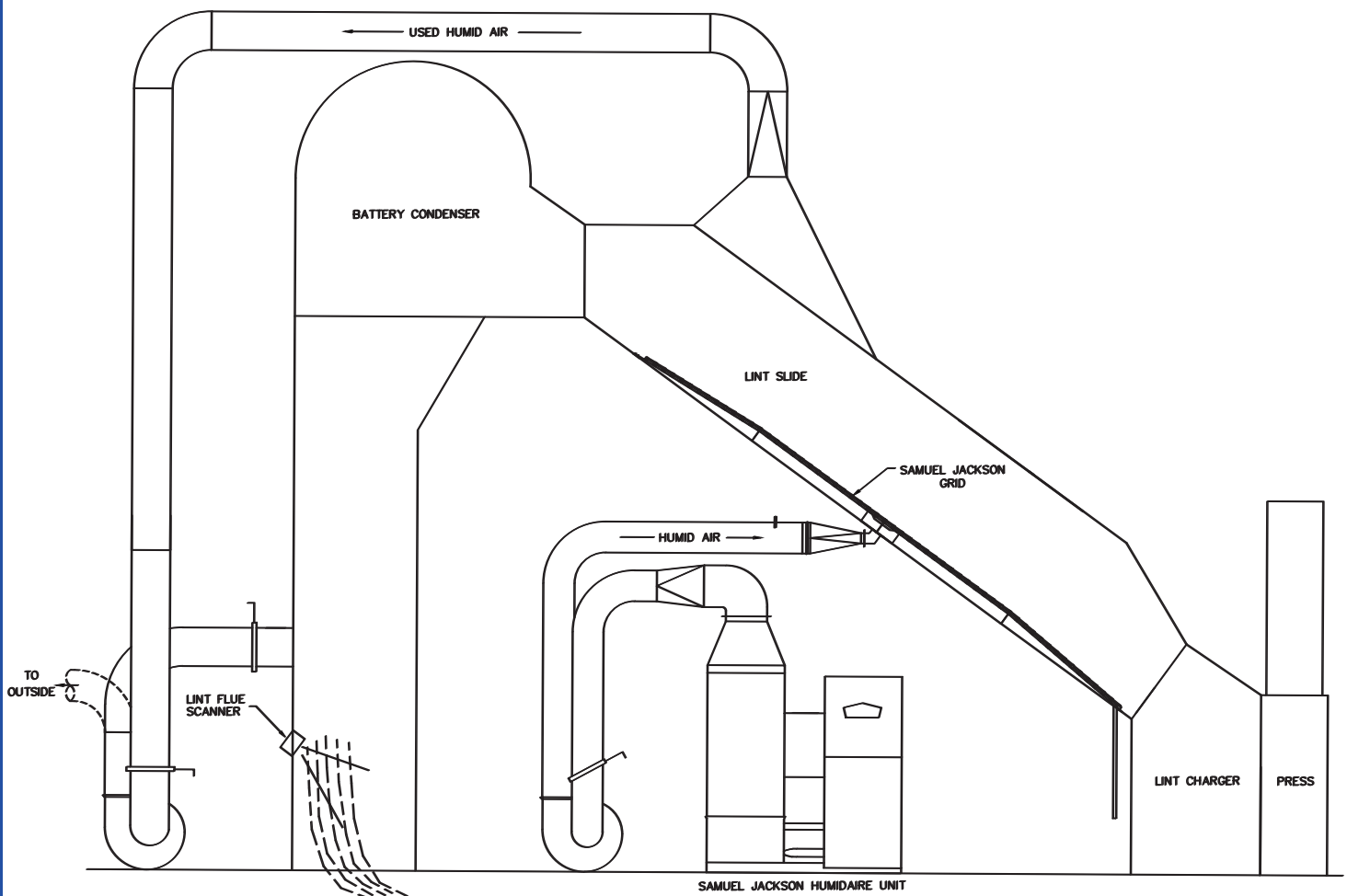
MAESTRO CONDITIONING HOPPER



STANDARD LINT SLIDE GRID

Standard Lint Slide Grid

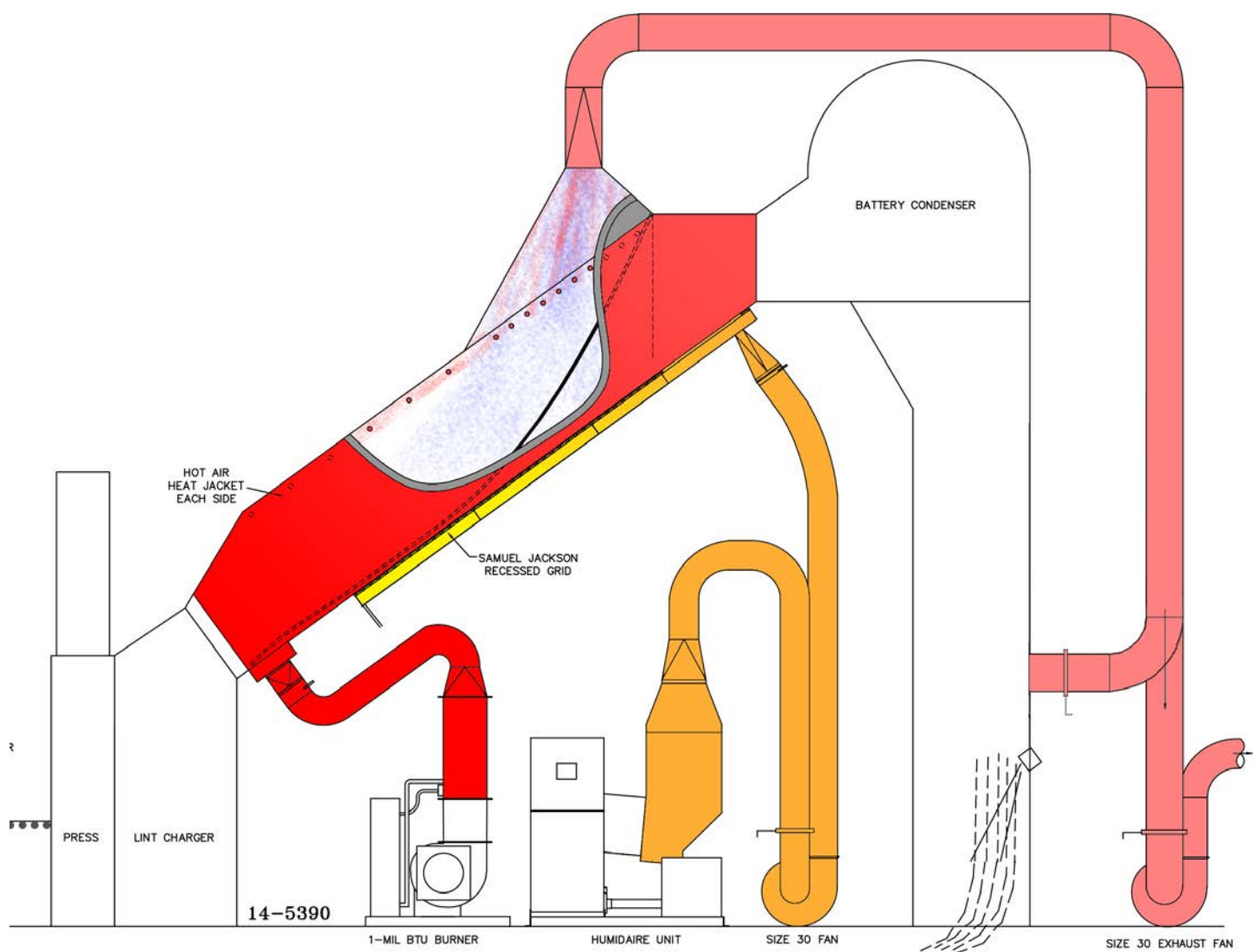
- Reduction of hydraulic press pressures
- Increased press production
- Effective introduction to moisture restoration



SUPER GRID

The Super Grid provides:

- More aggressive moisture restoration
- Increased exhaust airflow reliability
- Reduced maintenance and cleaning



STEAMROLLER 3

The Steamroller 3 provides:

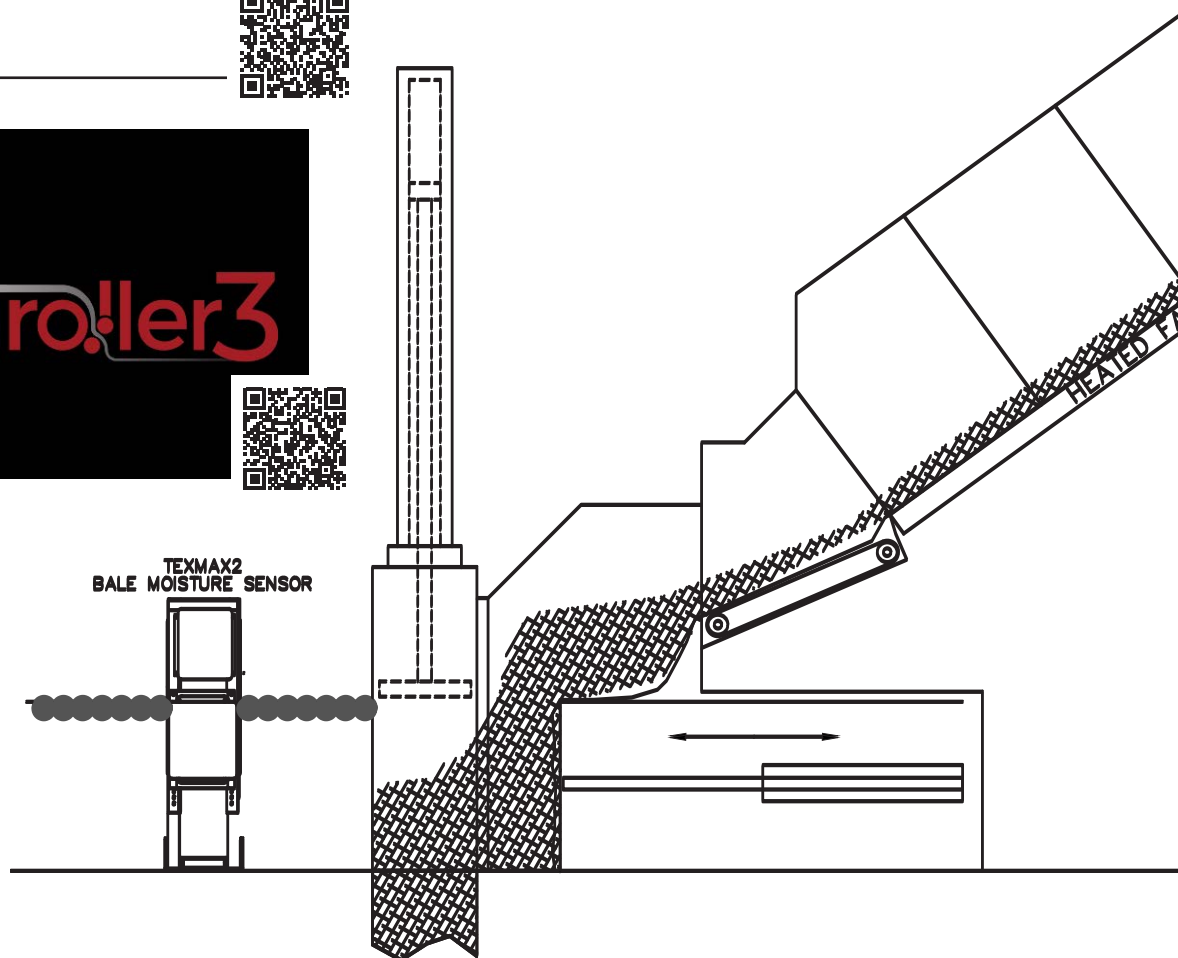
- Touch screen controls with backup VFD
- Industry leading moisture restoration capacity
- Integrated self-cleaning brush
- Consistent batt compression
- Most efficient applicator



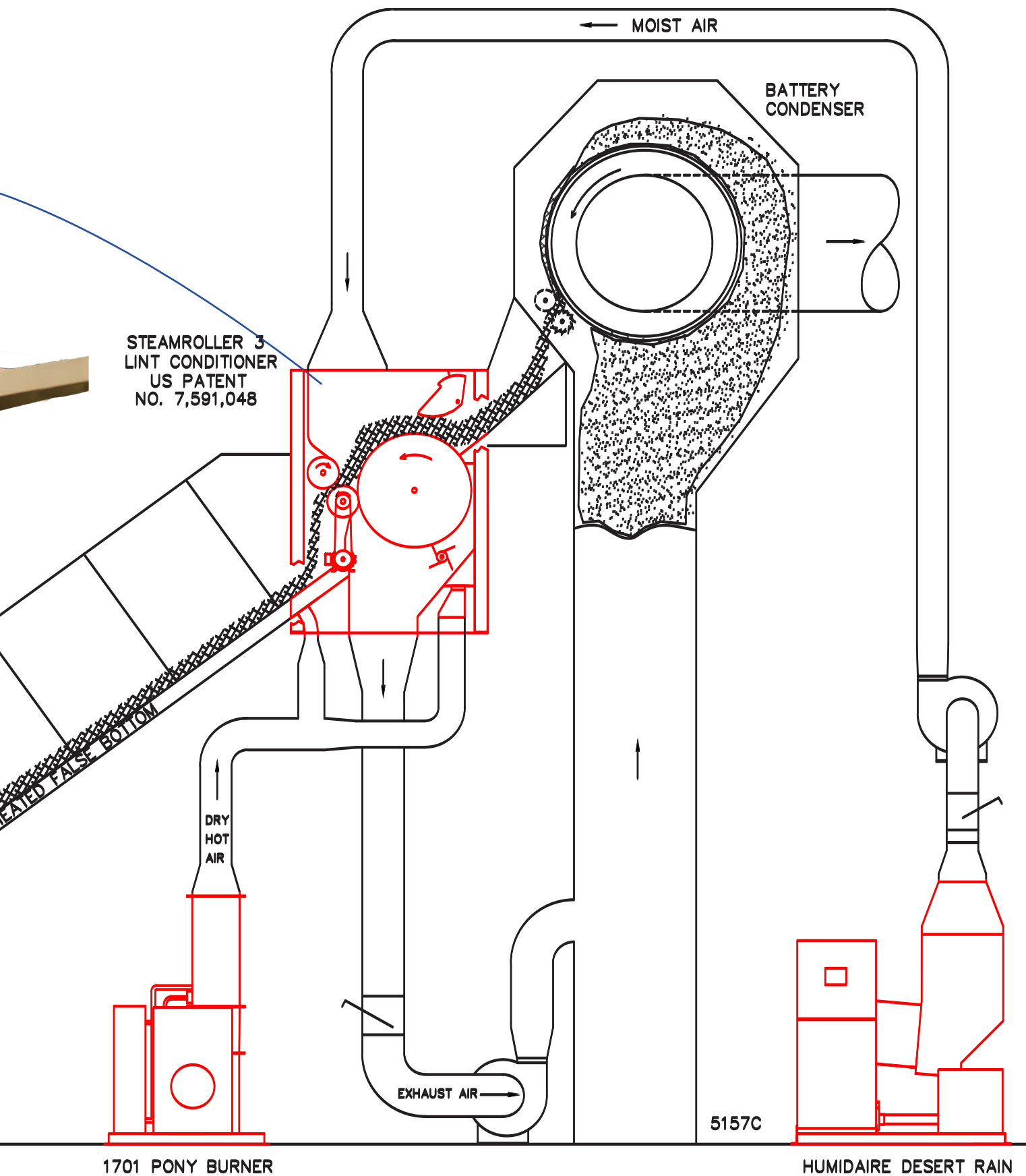
STEAMROLLER 3 ANIMATION



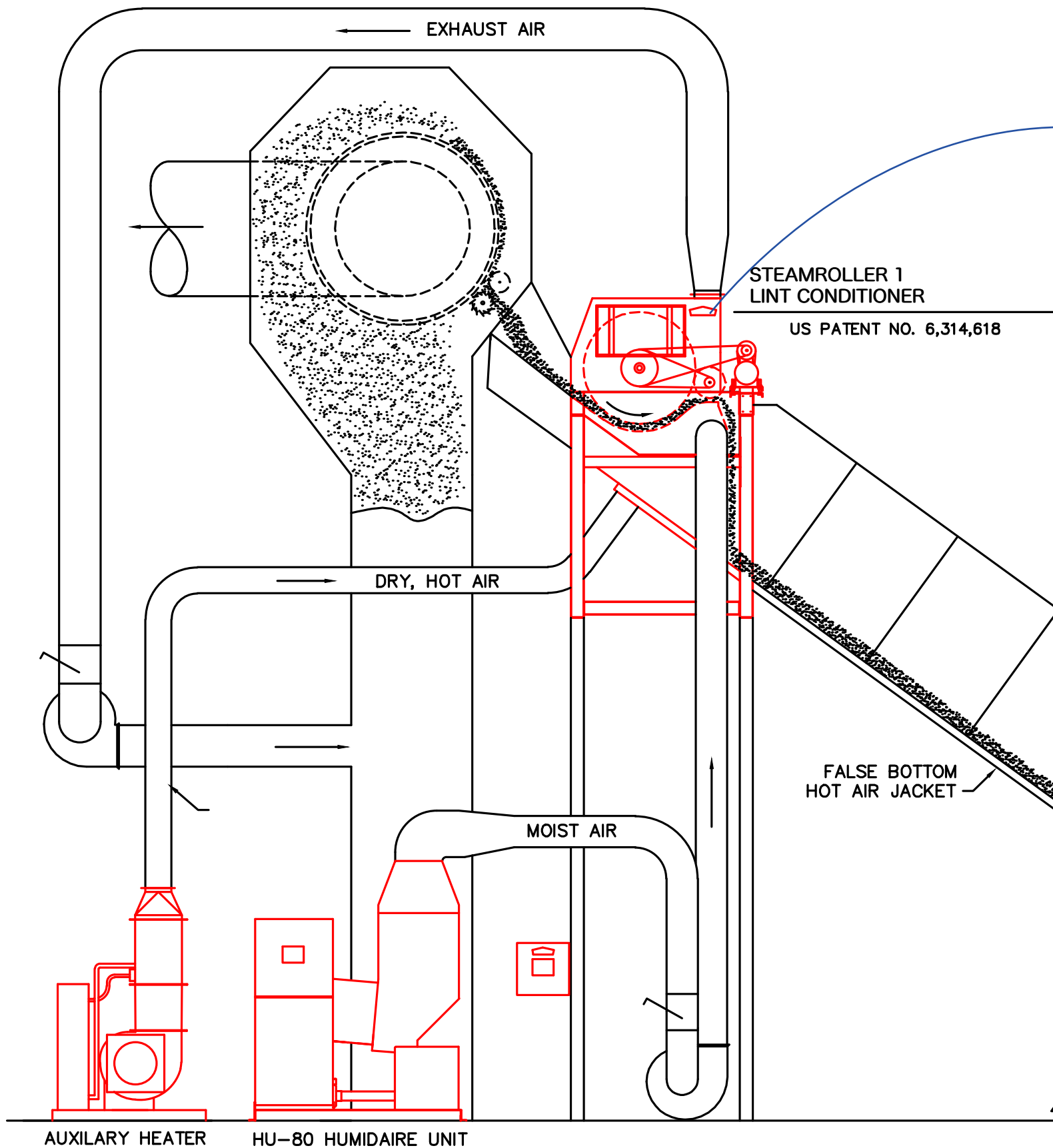
Steamroller3



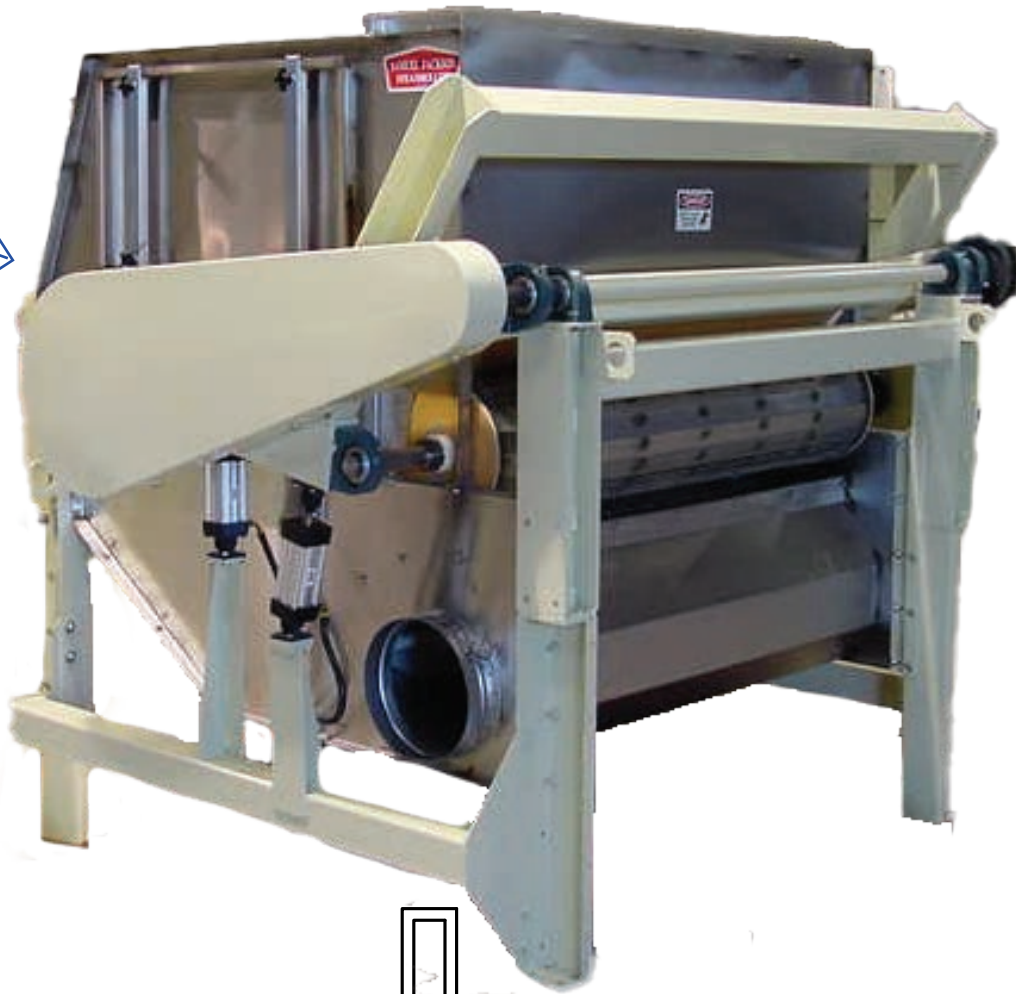
STEAMROLLER 3



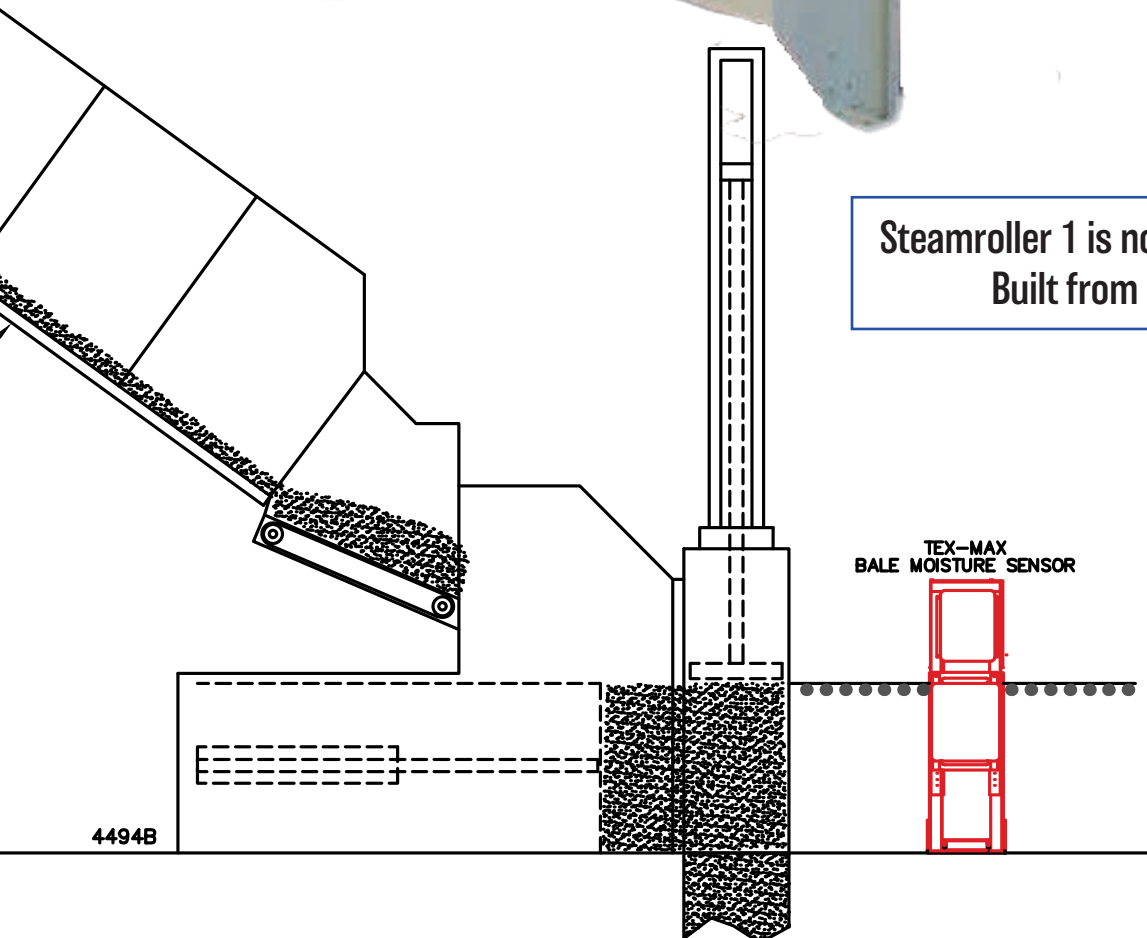
STEAMROLLER 1



STEAMROLLER 1



Steamroller 1 is no longer available.
Built from 1996-2016



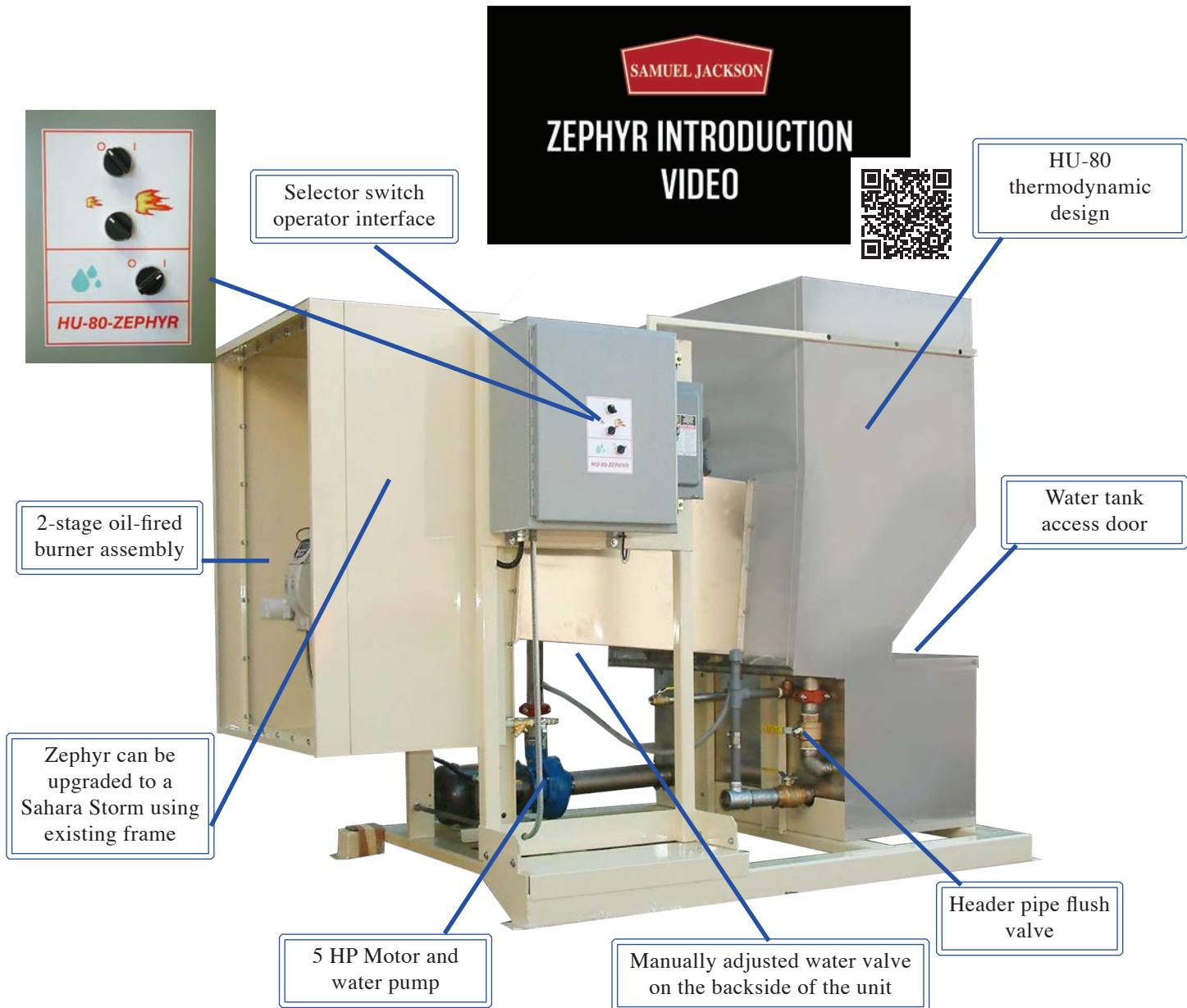
1701: GAS-FIRED AUXILIARY HEATER



The 1701 Heater Provides:

- Less applicator cleaning
- Over-sized air inlet for less maintenance
- Extremely reliable operation

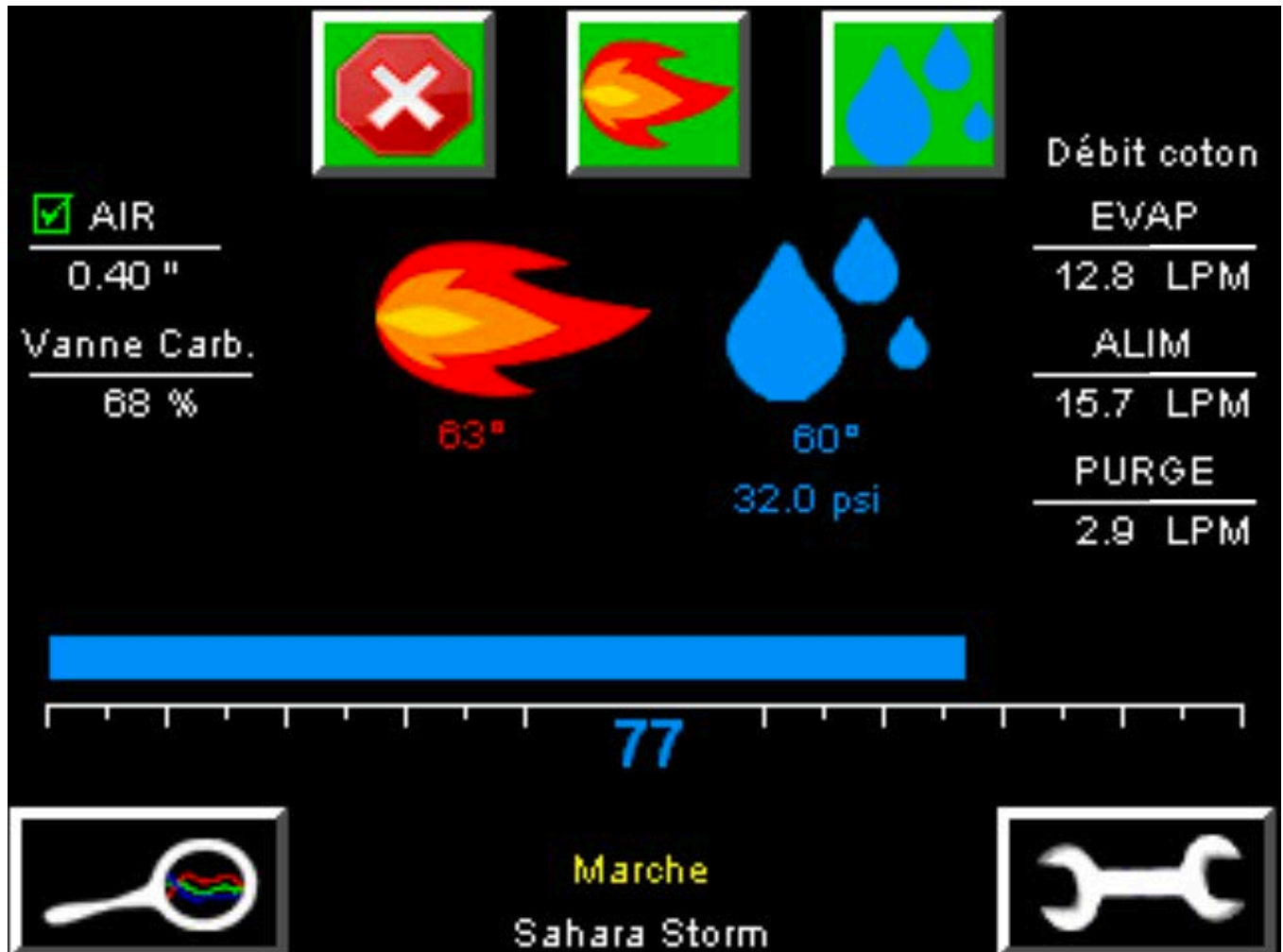
ZEPHYR



Zephyr features:

- It can handle 2,500 CFM of air.
- It uses an oil-fired commercial grade burner that burns either kerosene or diesel.
- The burner can change from high fire to low fire with the flip of a switch.
- Moist air output is adjusted with the water valve that is located on the back side of the unit.
- With the selector switch interface, operators will have little trouble learning how to make changes based on climate and condition of the cotton.

SAHARA STORM

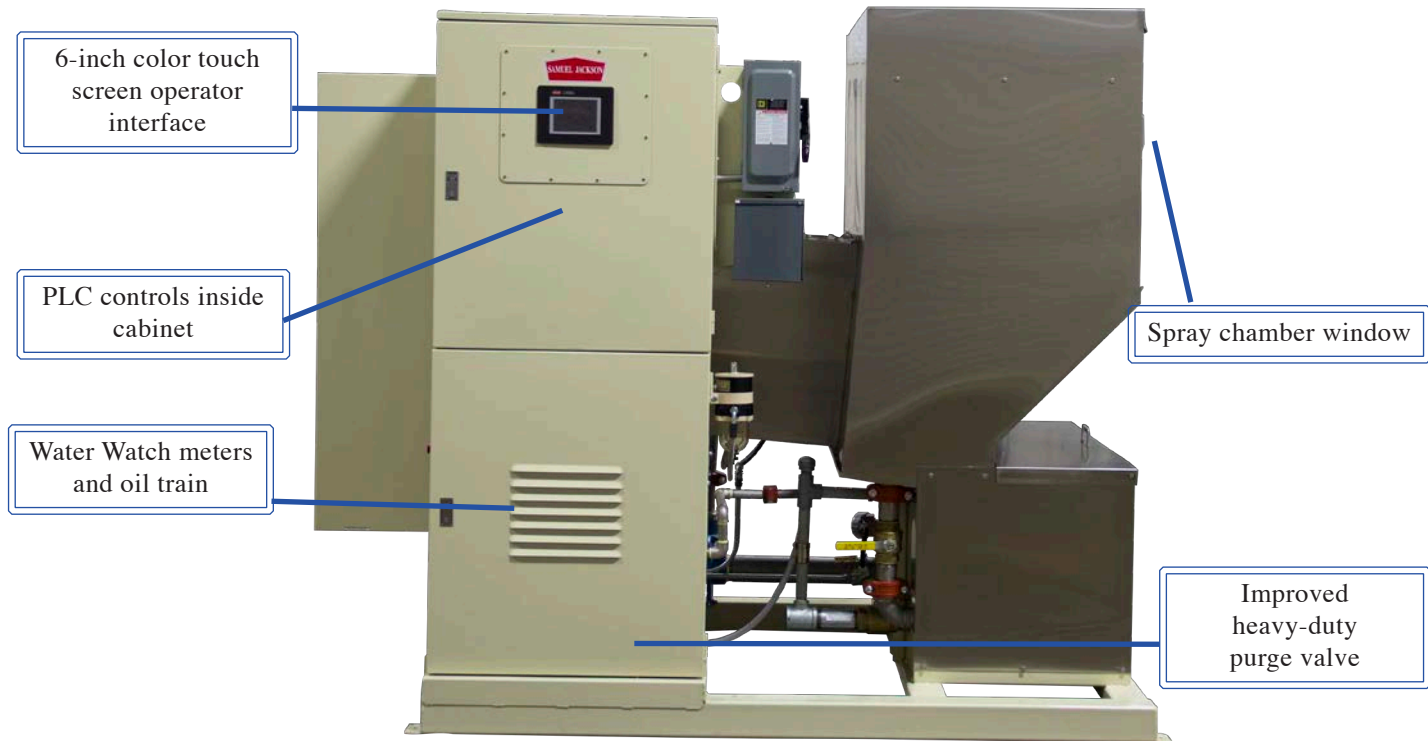


The Sahara Storm utilizes the Premium Touch Screen Interface that gives the operator instant access to run times and real-time water statistics. (French language option shown)

The Humidaire Sahara Storm comes standard with several impressive features such as:

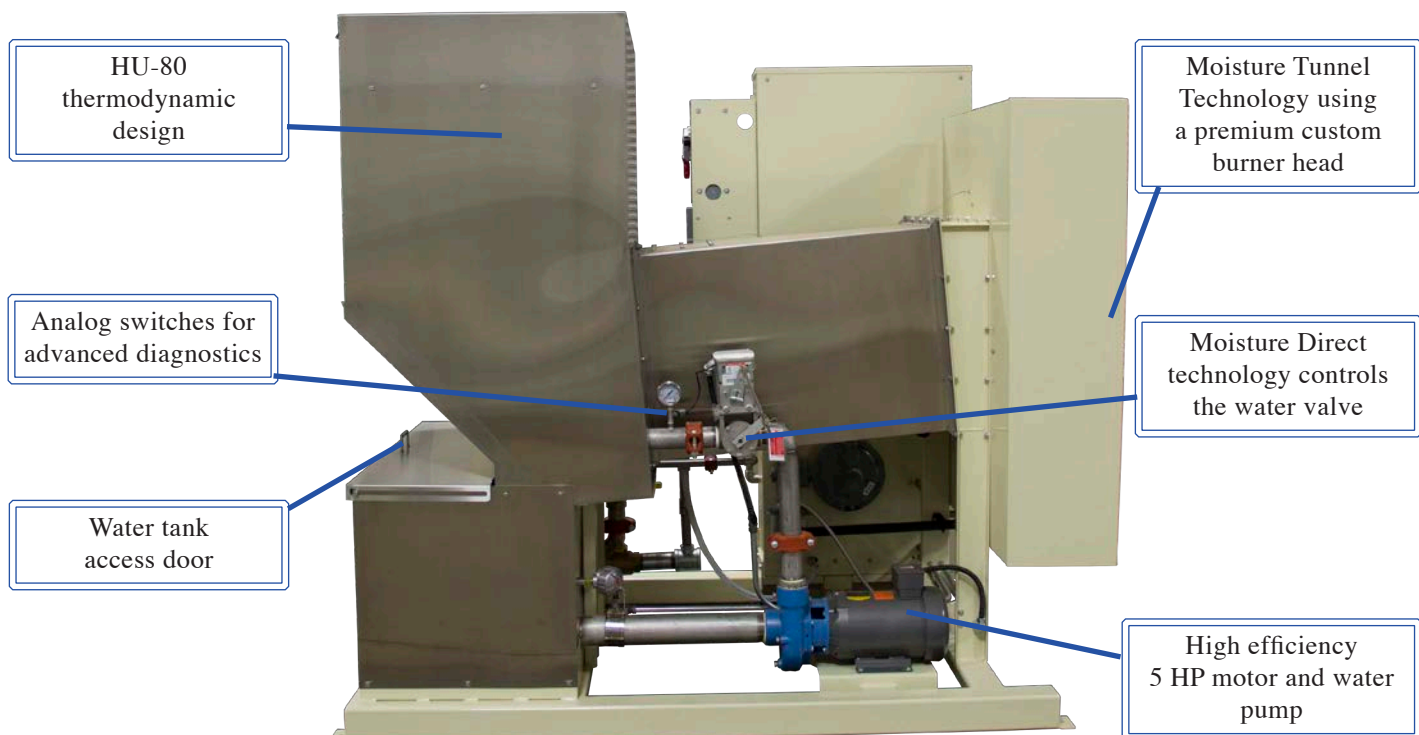
- A local color touchscreen for simple control and advanced diagnostics
- Fuel meter and consumption statistics
- Automatic heavy-duty purge system to reduce cleaning needs
- Target Bale Moisture Control with any Mirror and a TexMax
- Remote control from any Mirror X or Spectrum.
- Easy access to the water tank during operation

SAHARA STORM



Sahara Storm features:

- **Equipped with the 1600 Series Operating System**
- **Can handle 4,000 CFM of air**



VULCAIN HO-1: OIL-FIRED HEATER



Vulcain 1-Million Heater benefits:

- Integrated fan
- PLC controlled with a friendly local color touchscreen interface
- Many common parts with Sahara Storm Humidaires and other Vulcain Heaters.

KINETICO WATER SOFTENER



Scale build up in a Humidifier



This cutaway highlights a nozzle plugged with scale that looks clean from the outside.



Kinetico Water Softener benefits:

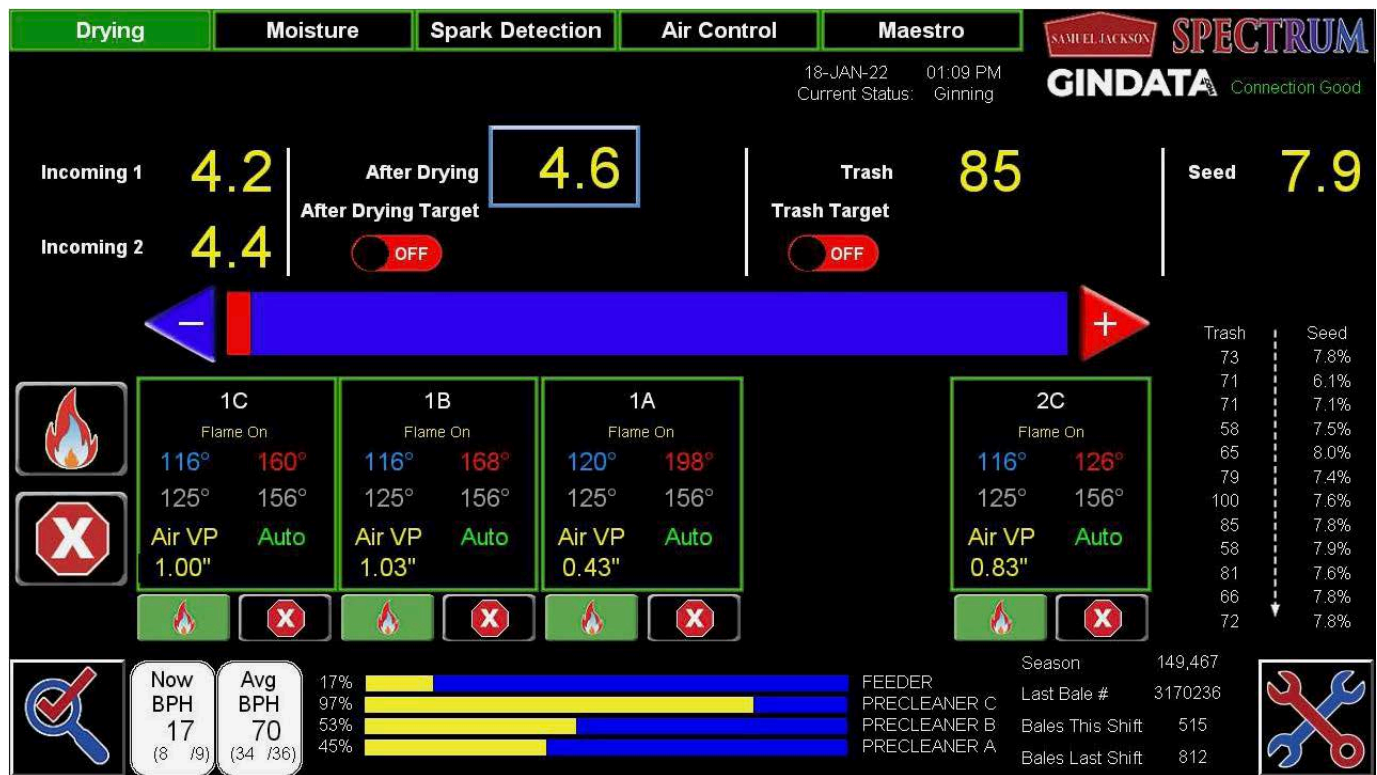
- No electricity required
- Double supply tanks for continuous operation
- Maximize Humidifier performance with less cleaning



MEASUREMENT & CONTROL PRODUCTS

“High-speed control demands high-speed measurement .”

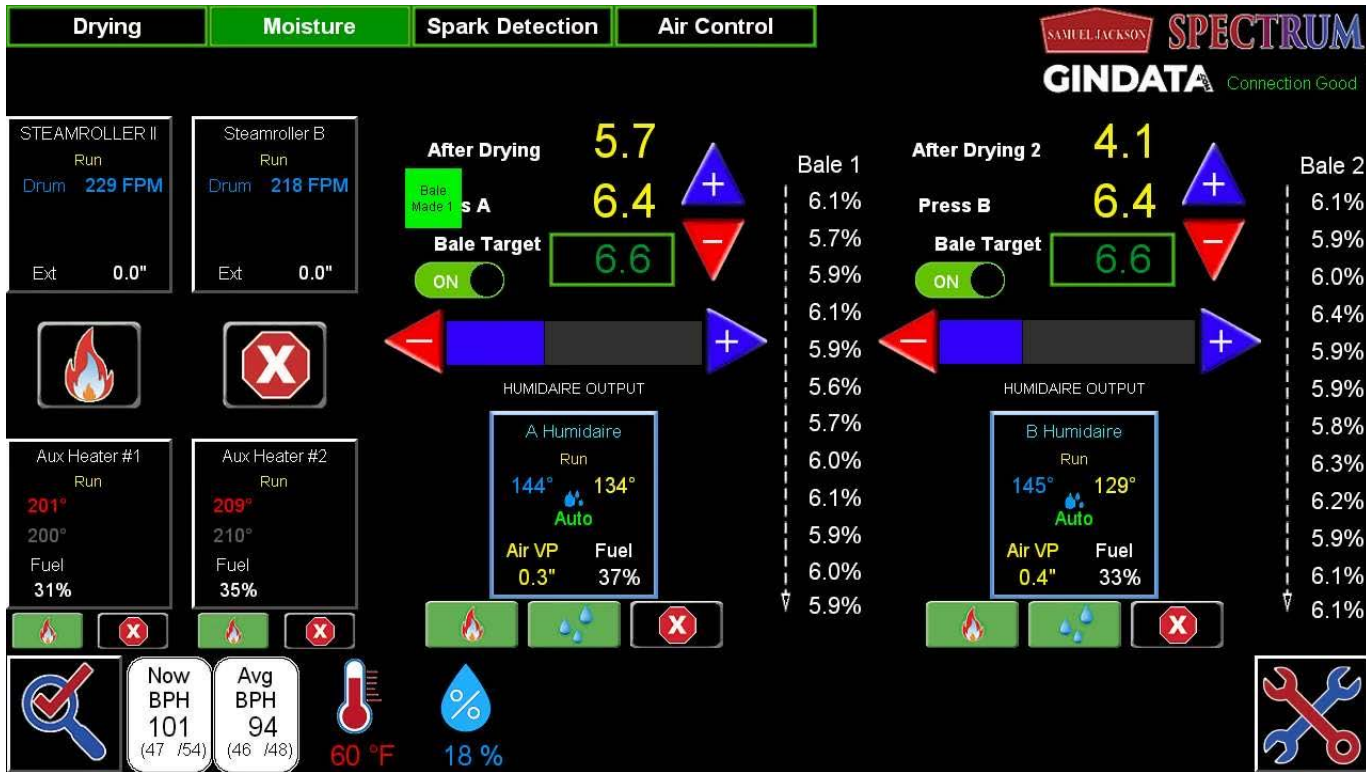
SPECTRUM



The Mirror Spectrum is the future of moisture control and data in cotton gins.

- Dual 19.5" touch screens
- Remote control for SJI heaters and Humidaires
- Supports up to 7 Flow Analyzers
- Supports many moisture sensors including: Module, Multiple-Incoming, After Drying, Seed, and Bale
- Supports Trash Tracker system
- Ambient temperature and humidity
- Connects to GINDATA including automatic reports via email, Advanced Data Analysis, and GinData Tv
- Next generation hardware platform for future feature development
- Supports Advanced Humidaire water pump control

SPECTRUM



GINDATA

From: "GinData.com" <server@gindata.com>
 Subject: Your Gin's Daily Cotton Story
 Date: November 4, 2021 at 8:33:14 AM CDT
 To: Sales@samjackson.com



GINDATA

TRI-COUNTY COTTON GIN DAILY COTTON STORY

Tuesday December 21, 2021

Season Total Bale Count

Average BPH

46149.0 41.4

Bales Ginned By Day

Sunday	Monday	Tuesday	Wednesday	Thursday	Friday	Saturday
28 774	29 1037	30 888	1 1017	2 927	3 616	4 660
5 1155	6 1074	7 1141	8 994	9 991	10 1038	11 1061
12 1119	13 1042	14 509	15 1097	16 995	17 799	18 172
19 0	20 743	21 973	22 589	23 4	24 0	25 0

Gin Downtime (Hours)

Gin Downtime During Day Shift (Hours)

9.5

Gin Downtime During Night Shift (Hours)

0.0

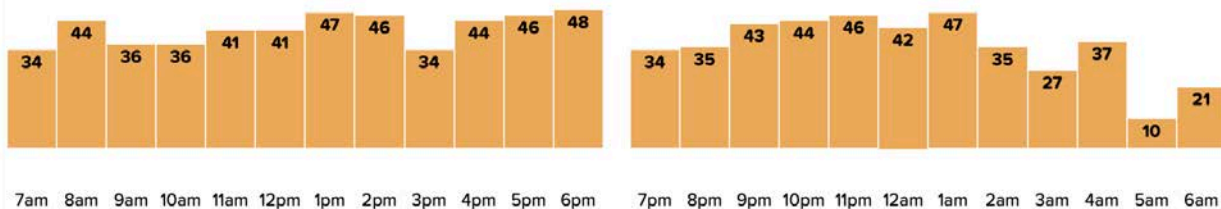
Bales Ginned By Shift

497

Tuesday 7AM - Tuesday 7PM

421

Tuesday 7PM - Wednesday 7AM



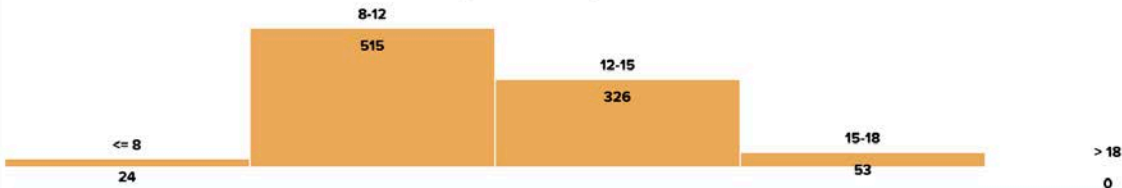
GIN DATA

Incoming Moisture

Highest Incoming Moisture (Average)

11.6

Highest Incoming Moisture Distribution

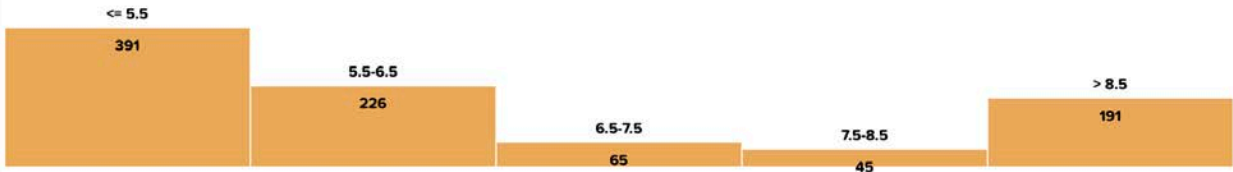


After Drying Moisture

Average After Drying Moisture

7.3

After Drying Moisture Distribution

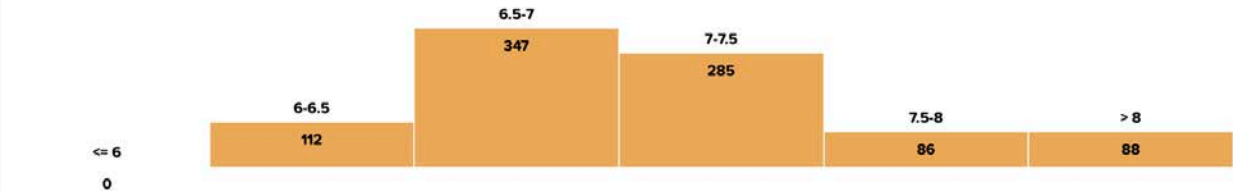


Bale Moisture

Average Bale Moisture

7.2

Bale Moisture Distribution

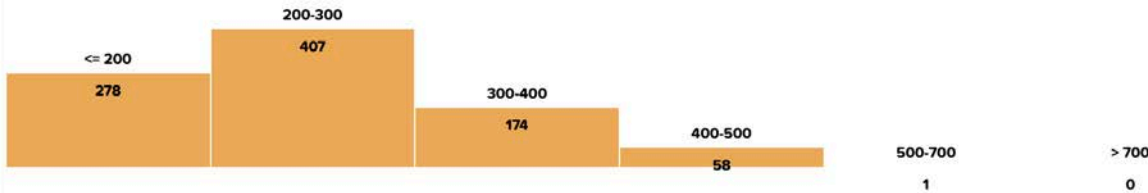


Trash

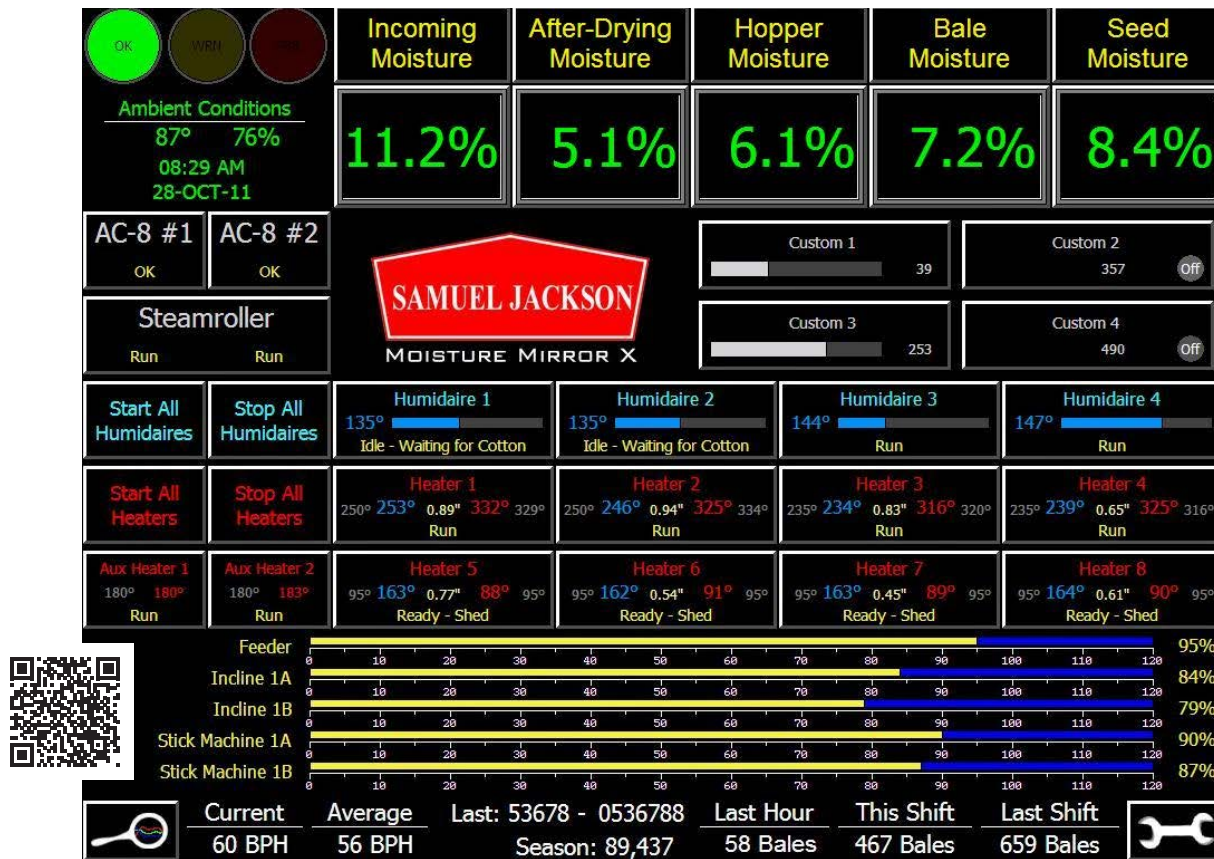
Average Trash

297

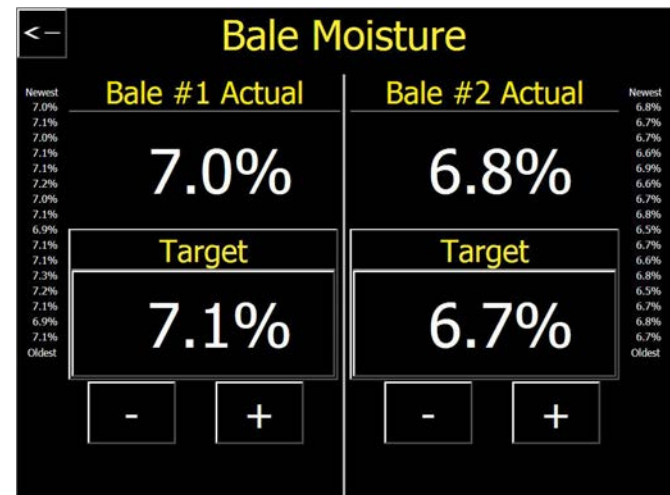
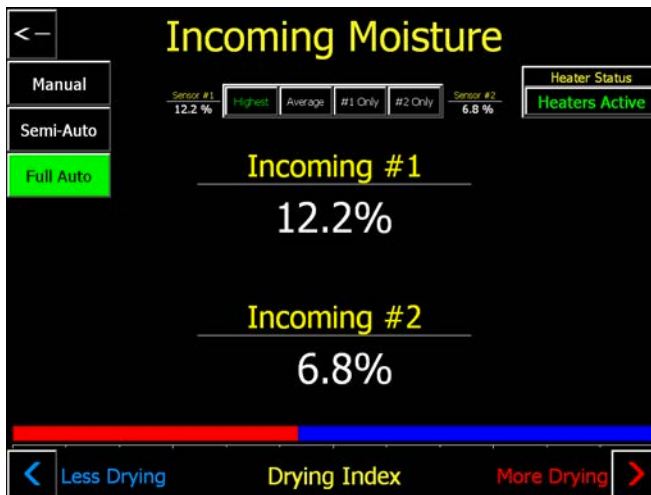
Trash Distribution



MOISTURE MIRROR 4X



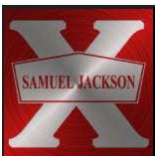
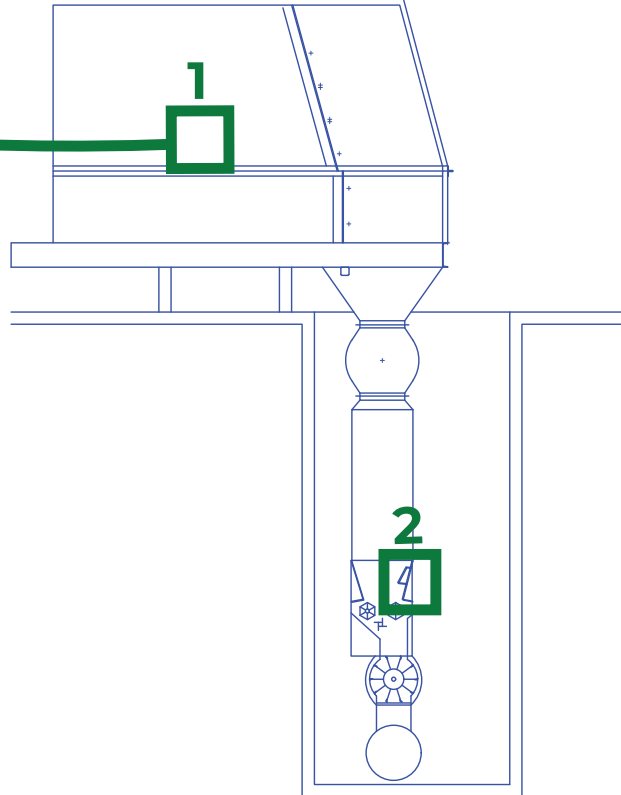
The Moisture Mirror 4X home screen (15-inch touch screen).



Moisture Mirror 4X provides:

- Double battery automatic bale moisture controls
- Integrated dual incoming moisture capability for faster heater response
- Website for data collection and search
- Trash Tracker monitoring and control capability

MOISTURE MIRROR 4X



Moisture Mirror 4X

Sam Jackson Virtual Gin

Report for 98-4-11 at 8:59 PM through 111-4-11 at 09:59 PM

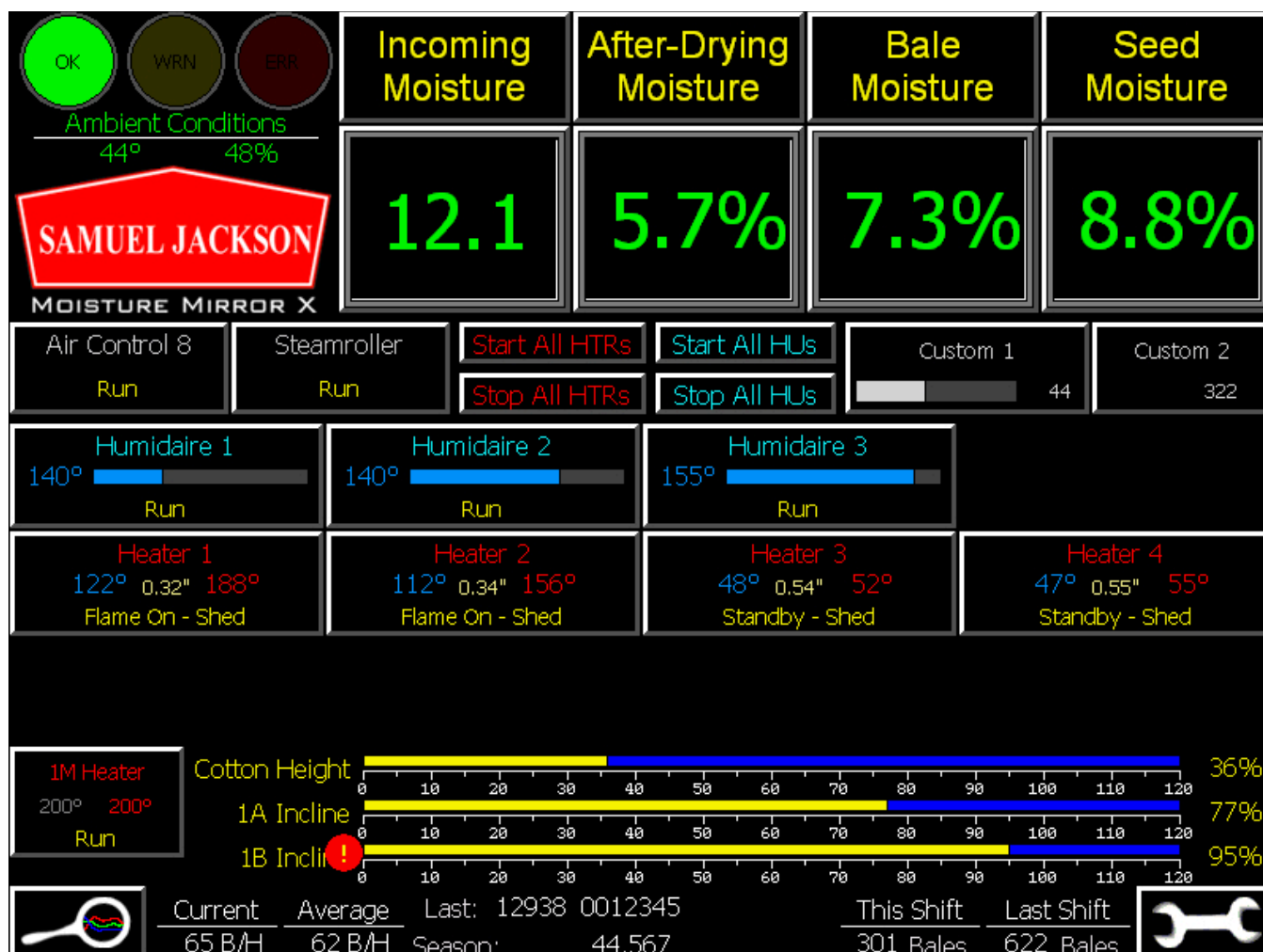
Get CSV File

Print

Number of Bales: 9556

Bale ID	Incoming Moisture	After Dry Target	After Drying Moisture	Bale Moisture Target	Bale Moisture	Instant BPH	Ambient Temperature	Ambient Humidity	Heater 1 Before Mix	Heater 1 After Mix	Heater 2 Before Mix	Heater 2 After Mix
4555241	8.2	7	5.1	7.5	6.9	40	70.4	10.3	352	151	240	143
4555242	7.4	7	5.2	7.5	6.9	37	73.1	9.6	340	157	238	143
4555243	6.3	7	5.4	7.5	6.9	41	73.2	9.5	356	157	245	141
4555244	7.8	7	5.3	7.5	6.9	34	74	9.6	331	181	250	152
4555245	7	7	5.6	7.5	6.7	42	74.5	9.2	372	163	154	128
4555246	7.1	7	5.9	7.5	7.1	27	74.4	9.4	343	146	137	103
4555247	8.9	7	5.9	7.5	6.9	45	74	9.6	342	142	242	120
4555248	8.9	7	5.7	7.5	7.5	45	74.2	9.6	333	150	237	130
4555249	9.2	7	5.5	7.5	7.5	45	74.2	9.7	339	156	245	140
4555250	7.7	7	5.7	7.5	7.3	41	74.4	9.7	349	160	244	140
4555251	10.1	7	6.1	7.5	7.3	43	74.9	9.5	371	158	241	135
4555252	7.8	7	5.2	7.5	7.1	35	75.6	9.3	353	155	238	134
4555253	7.9	7	5.6	7.5	6.9	40	75.6	9.3	348	150	239	132
4555254	8.4	7	5.7	7.5	7.1	46	75.3	9.5	339	148	245	130

MOISTURE MIRROR 3X

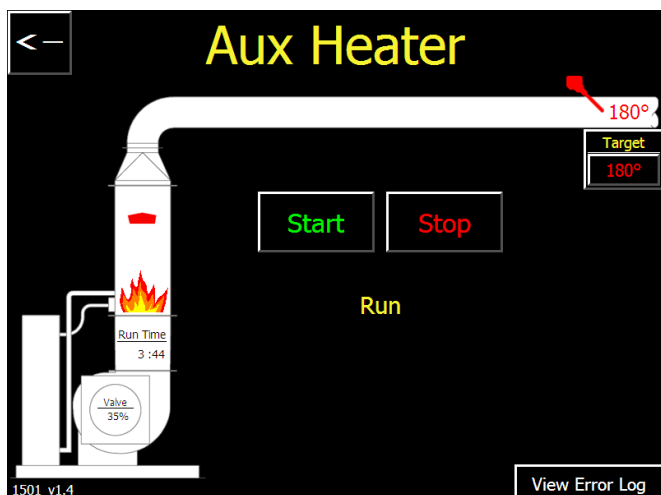
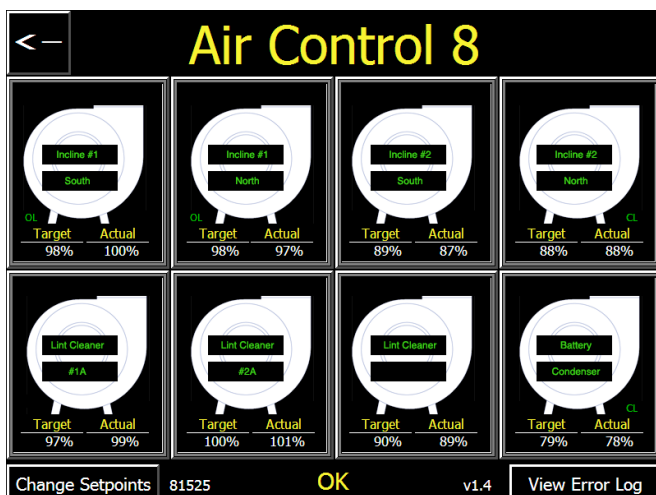
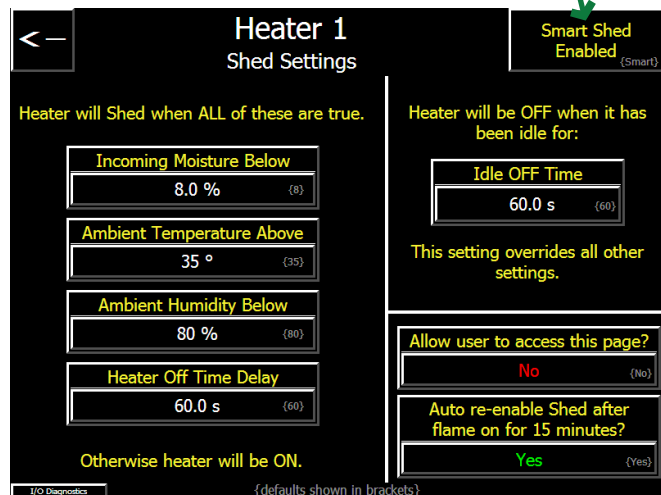
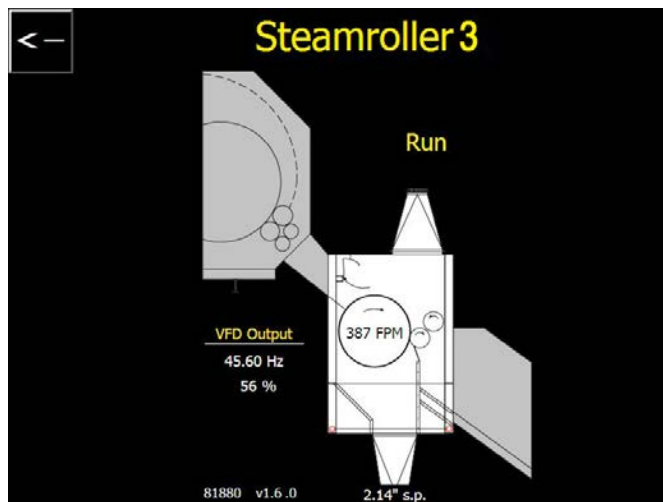
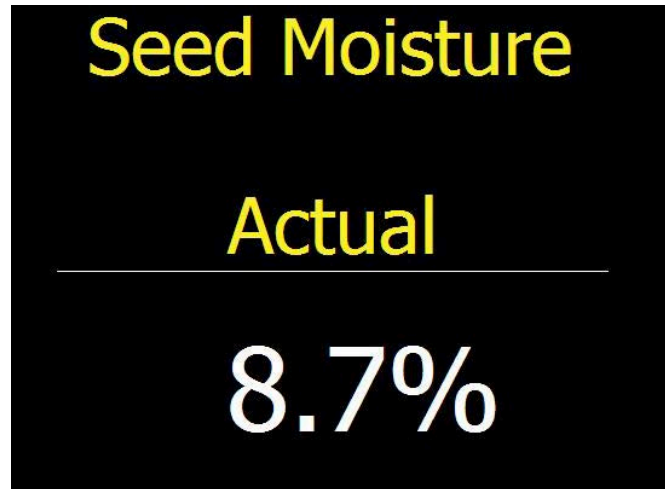


The Moisture Mirror 3X home screen (12-inch screen size).

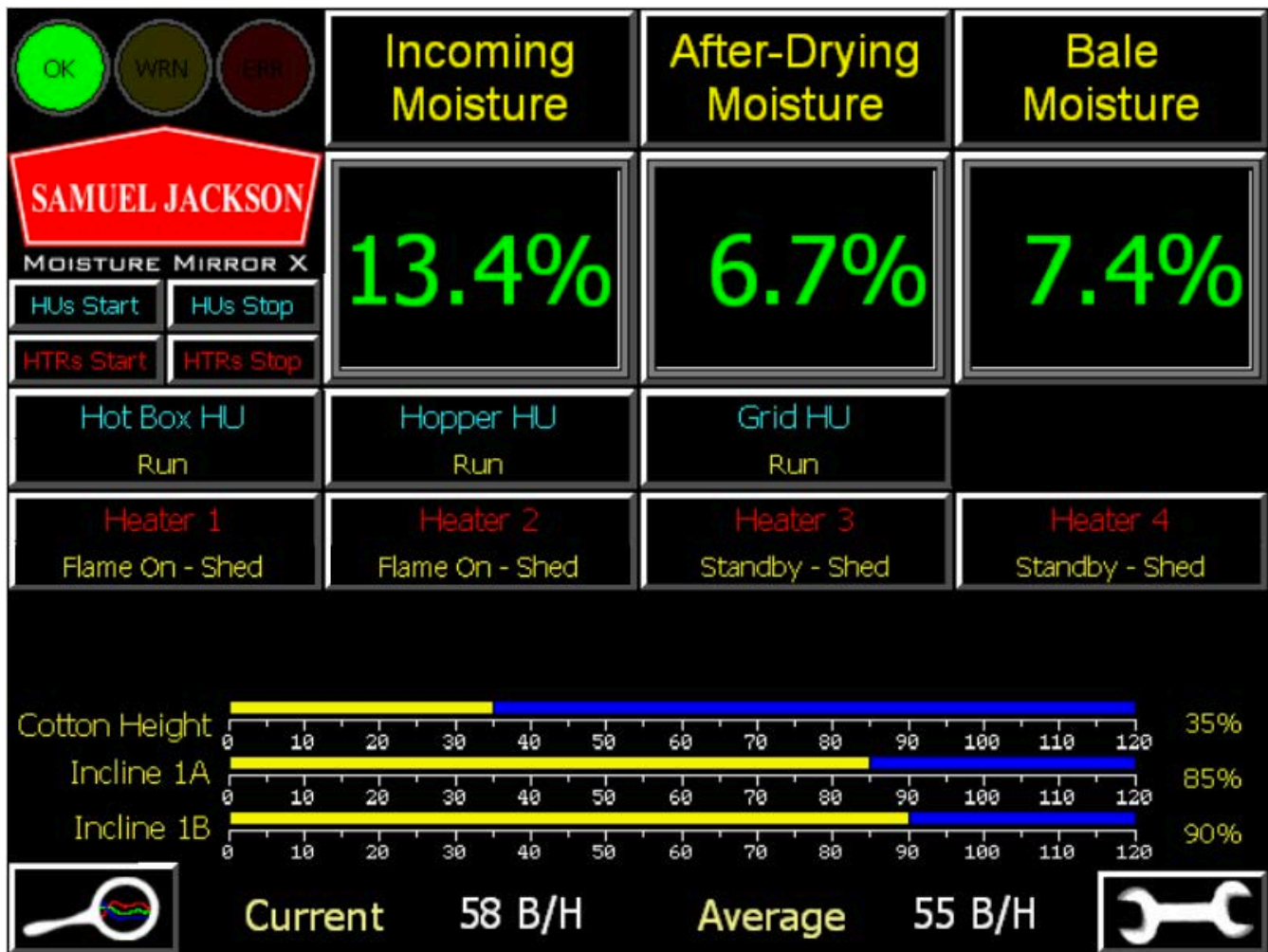
The Moisture Mirror 3X provides:

- Seed Moisture input
- Pony Burner Remote Control
- Air Control 8 and Steamroller monitoring
- Season/Shift Bale Counter
- Two custom input channels
- Displays ambient temperature and humidity
- Supports Argus to Mirror interface

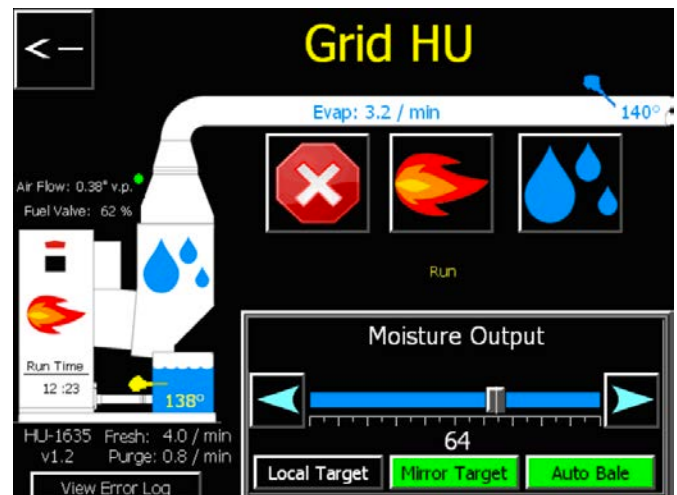
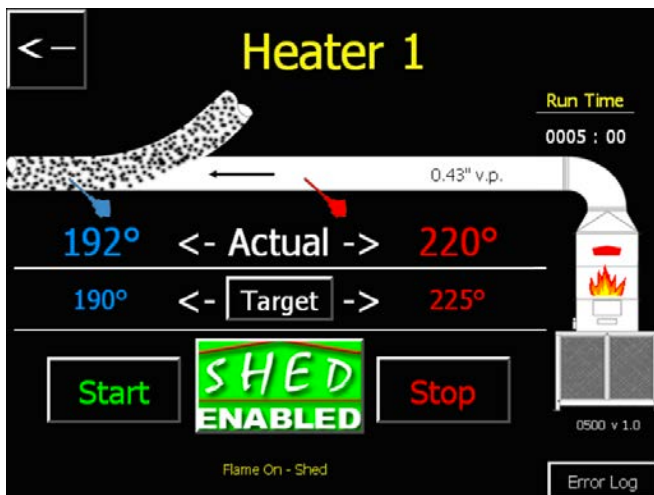
MOISTURE MIRROR 3X



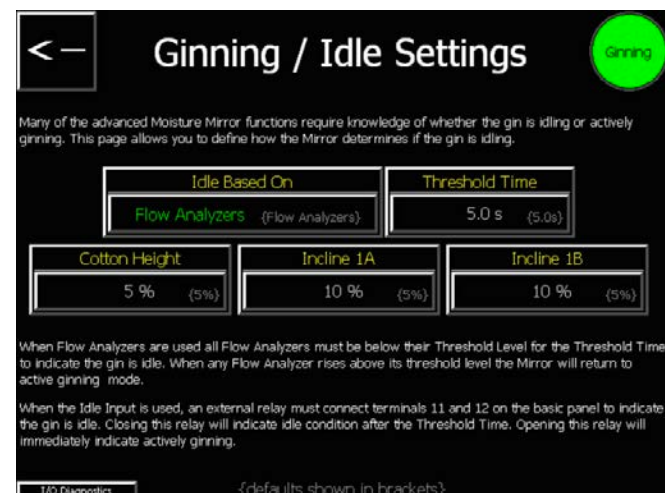
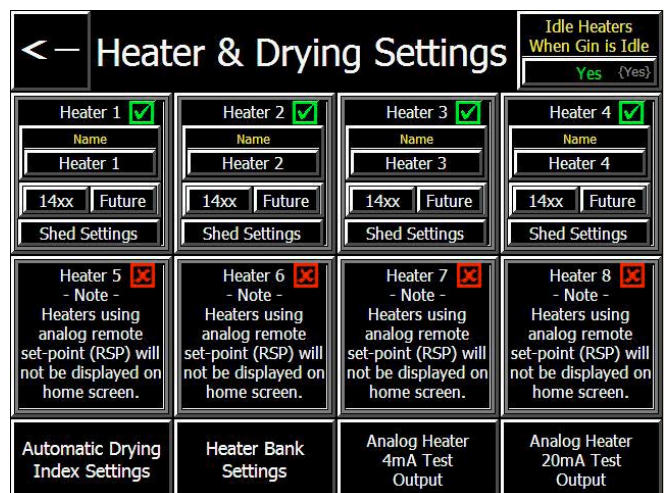
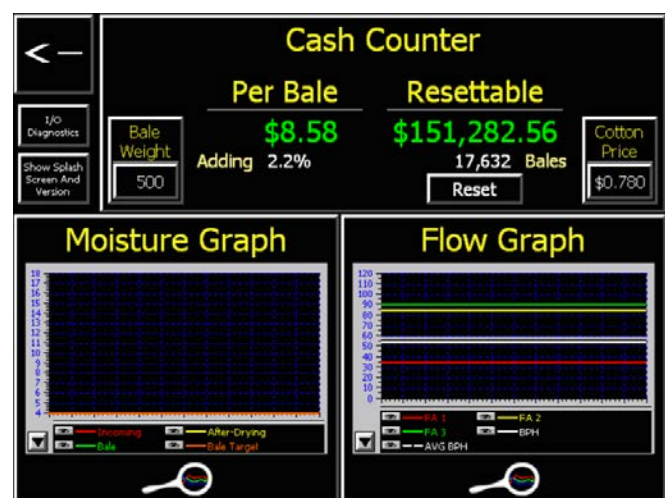
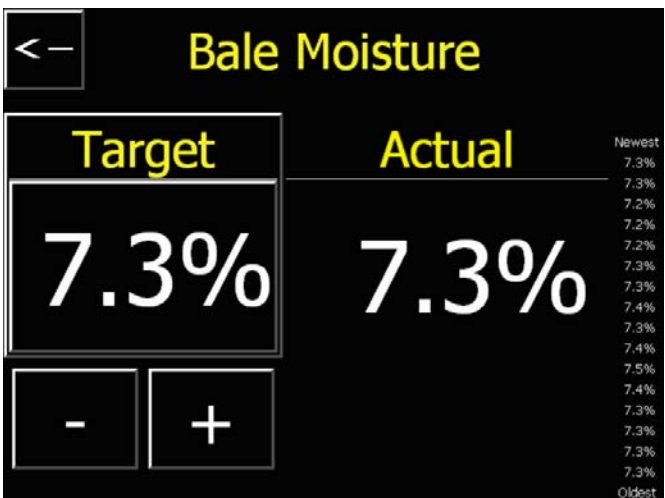
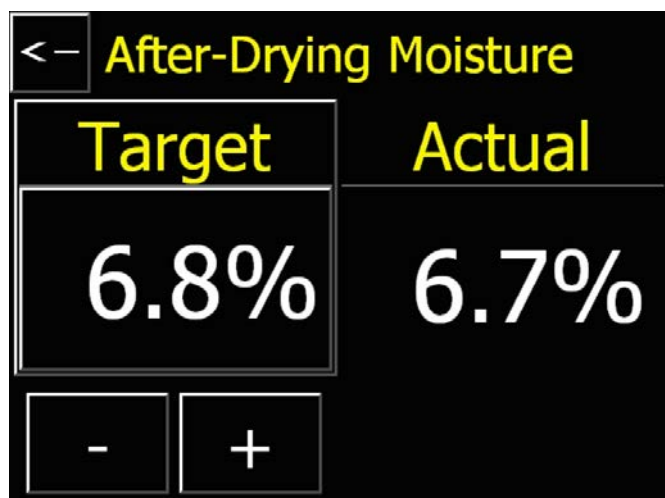
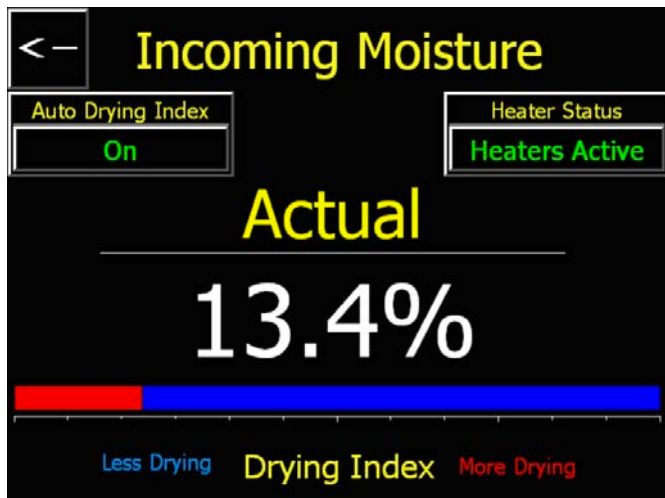
MOISTURE MIRROR 2X



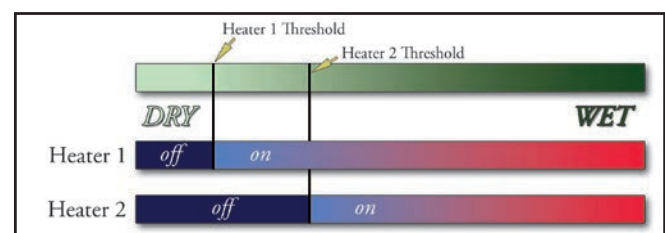
The Moisture Mirror 2X home screen has a 10-inch screen.



MOISTURE MIRROR 2X



Simple Shed is easy to set up. Heaters can have separate thresholds staging the moisture content at which they shed on and off.

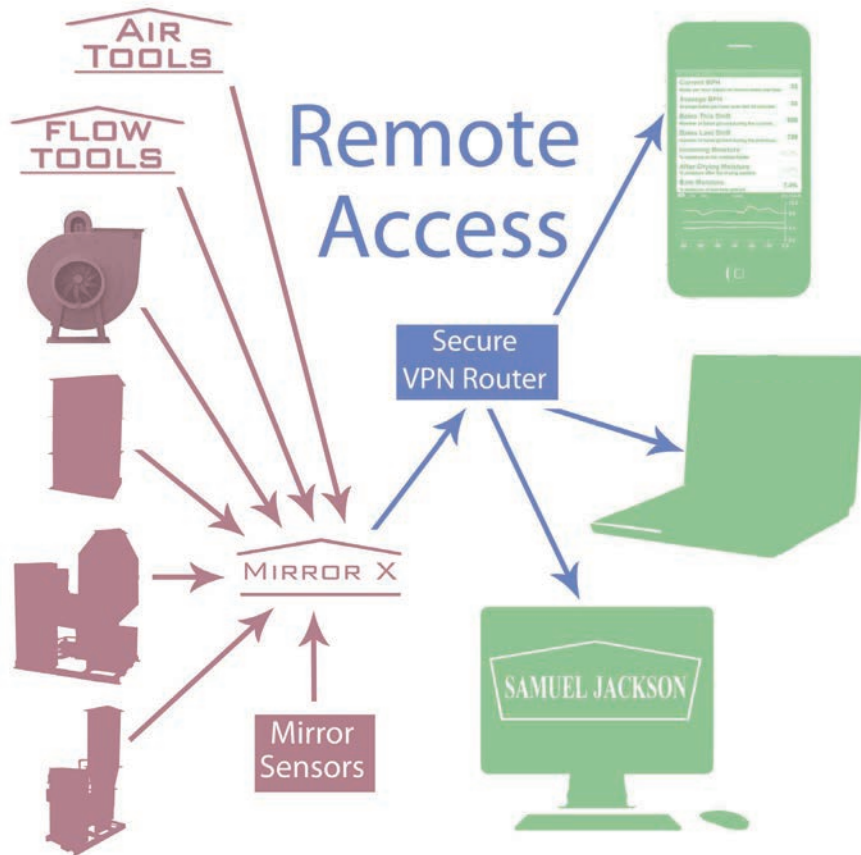
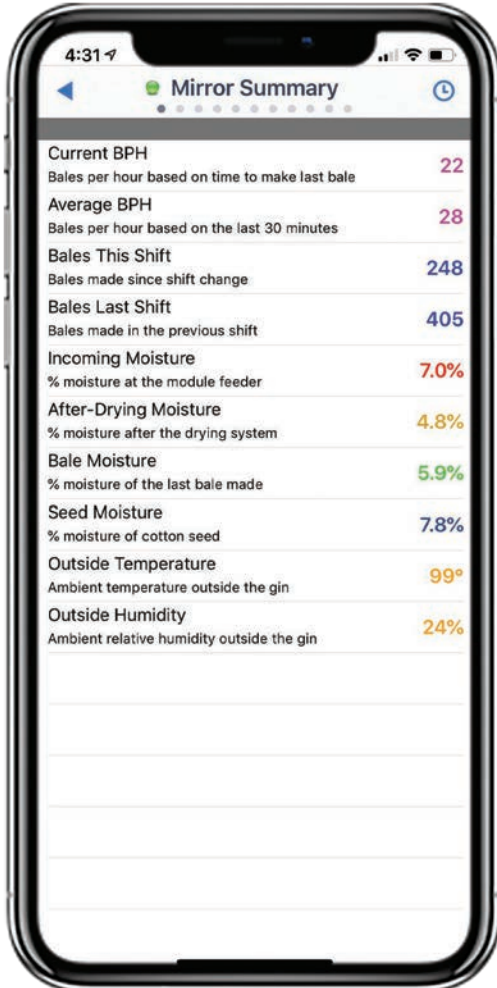


MIRROR COMPARISON CHART

				
	Mirror 2X	Mirror 3X	Mirror 4X	Mirror Spectrum
Model #	81661B	81880B	81900B	83640
Touch Screen Size	10-inch	12-inch	15-inch	Dual 19-inch
Seed Moisture Input	X	✓	✓	✓
Incoming Moisture Inputs	✓	✓	2	4
Bale Moisture Inputs	✓	✓	2	2
Pony Burner Remote	X	✓	2	2
Steamroller 2/3 Monitoring	X	✓	2	2
Air Control 8 Remote	X	✓	✓	✓
Ginspire Monitoring	X	✓	✓	✓
AirTools/Choke Finder Monitoring	X	X	X	✓
Supports Argus to MMX	X	✓	✓	✓
Supports Advanced LFS	X	X	X	✓
SJI Connect App	✓	✓	✓	✓



REMOTE ACCESS SERVICE & SJI CONNECT



Available on the
App Store



THE SLED 2



The 81680 Sled 2 in action.



A Sled 2 and a non-Sam Jackson hot box.

HOT BOX DOOR SENSOR



The 81670 Hot Box sensor constantly monitors the moisture content of incoming seed cotton.



The moisture sensor is mounted on the angled area at the bottom of the cotton inlet door putting it into direct contact with seed cotton.

TexMax 2 Module Sensor



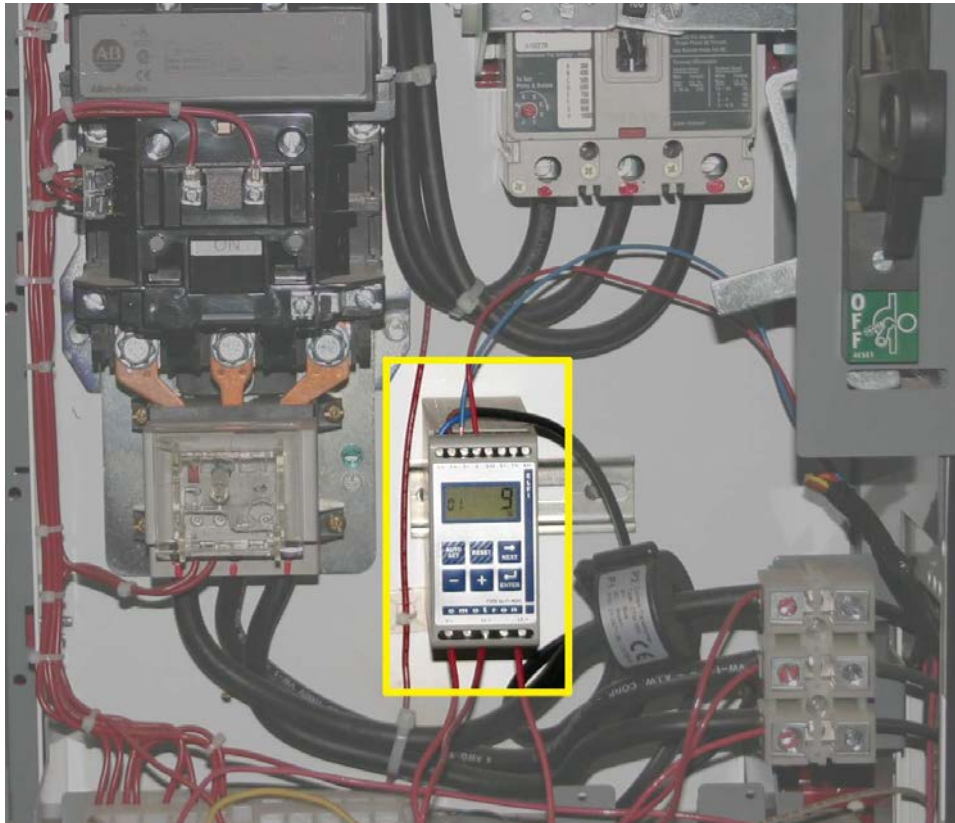
UNIVERSAL AND SEED SENSOR



TexMax 2 Bale Sensor



FLOW ANALYZERS



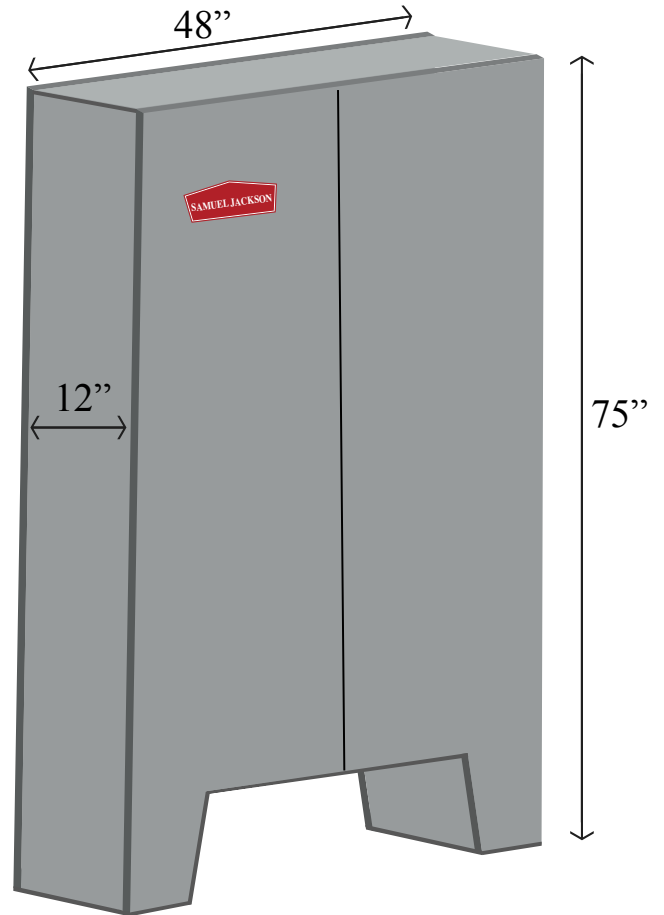
The 81520 Flow Analyzer is normally installed near the motor starter.



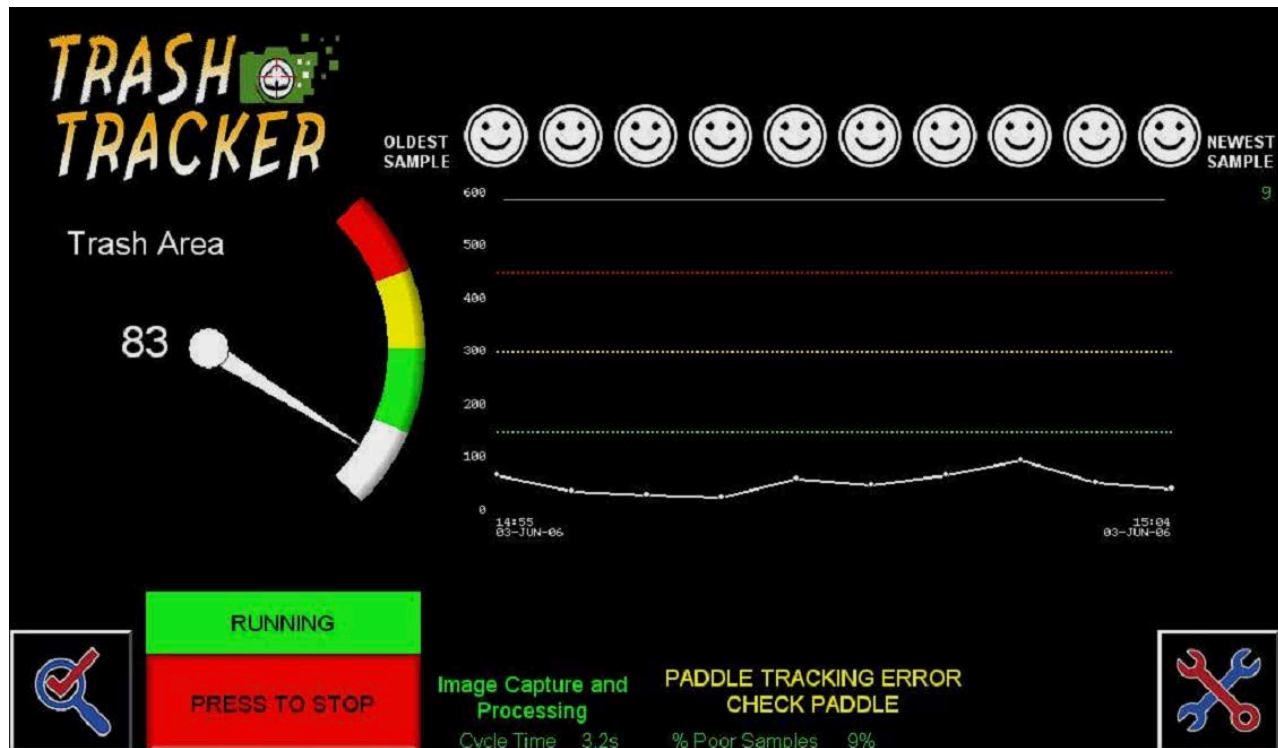
Flow Analyzer 1 Name	Alarm Status	Alarm Trip Point
M. Feeder	Enable {Enable}	90 % {110%}
Flow Analyzer 2 Name	Alarm Status	Alarm Trip Point
Incline 1A	Enable {Enable}	94 % {110%}
Flow Analyzer 3 Name	Alarm Status	Alarm Trip Point
Incline 1B	Enable {Enable}	96 % {110%}

Flow Analyzer channels can be programmed with custom alarms, allowing you to do things like pause the incoming feed if an incline reaches near overloading.

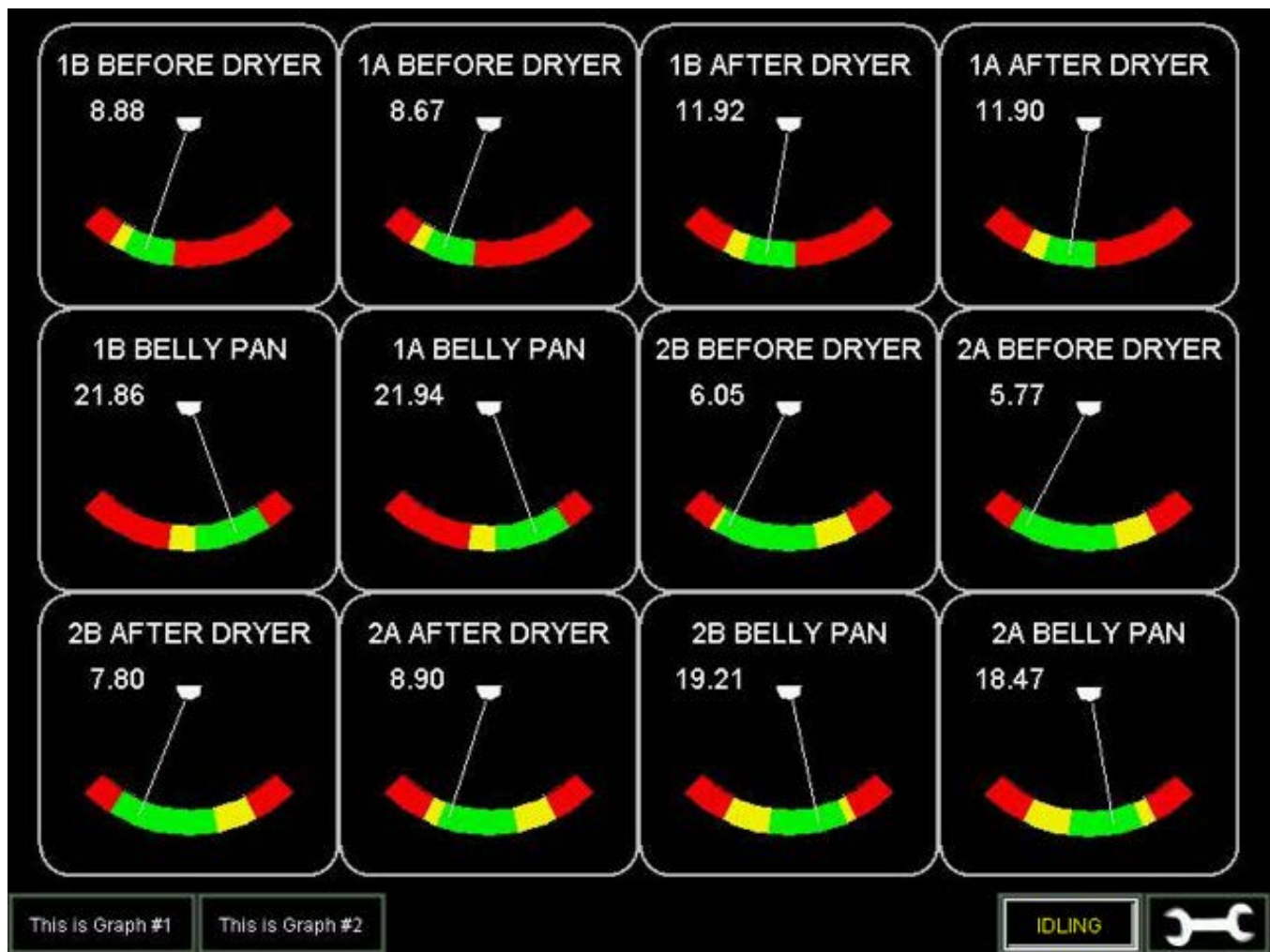
THE TOOL BOX



TRASH TRACKER



Air Tools



The 81000 Air Tools 12 includes an 12-inch color touch screen that is easy to read and use.



The 22420B
Static Pressure Port.

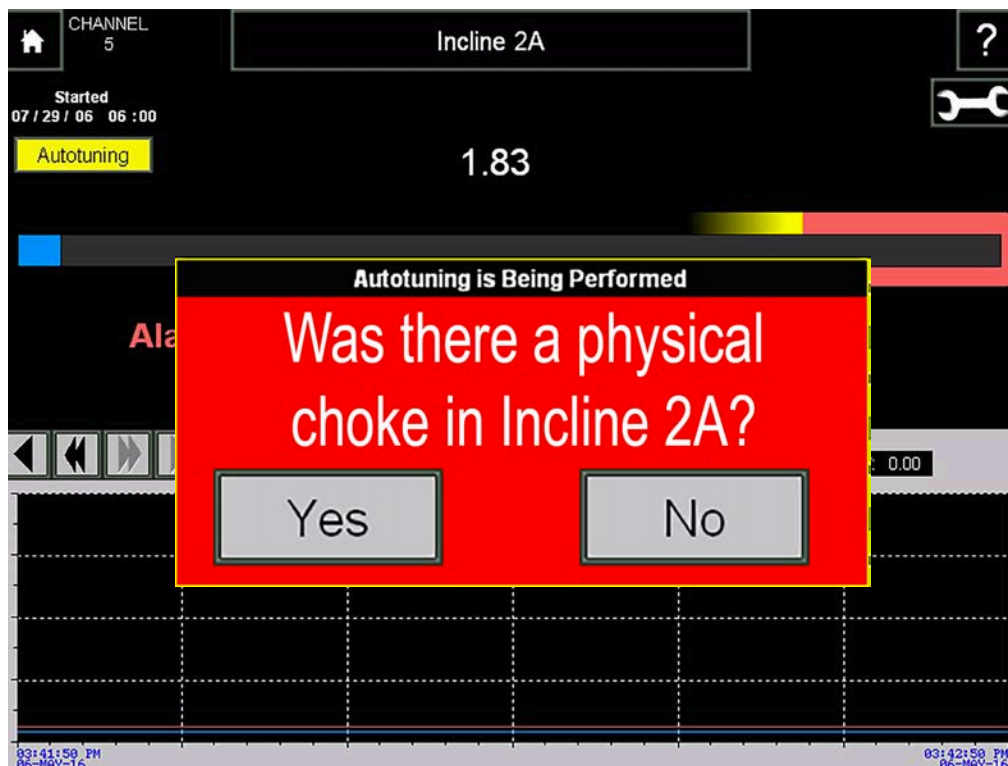
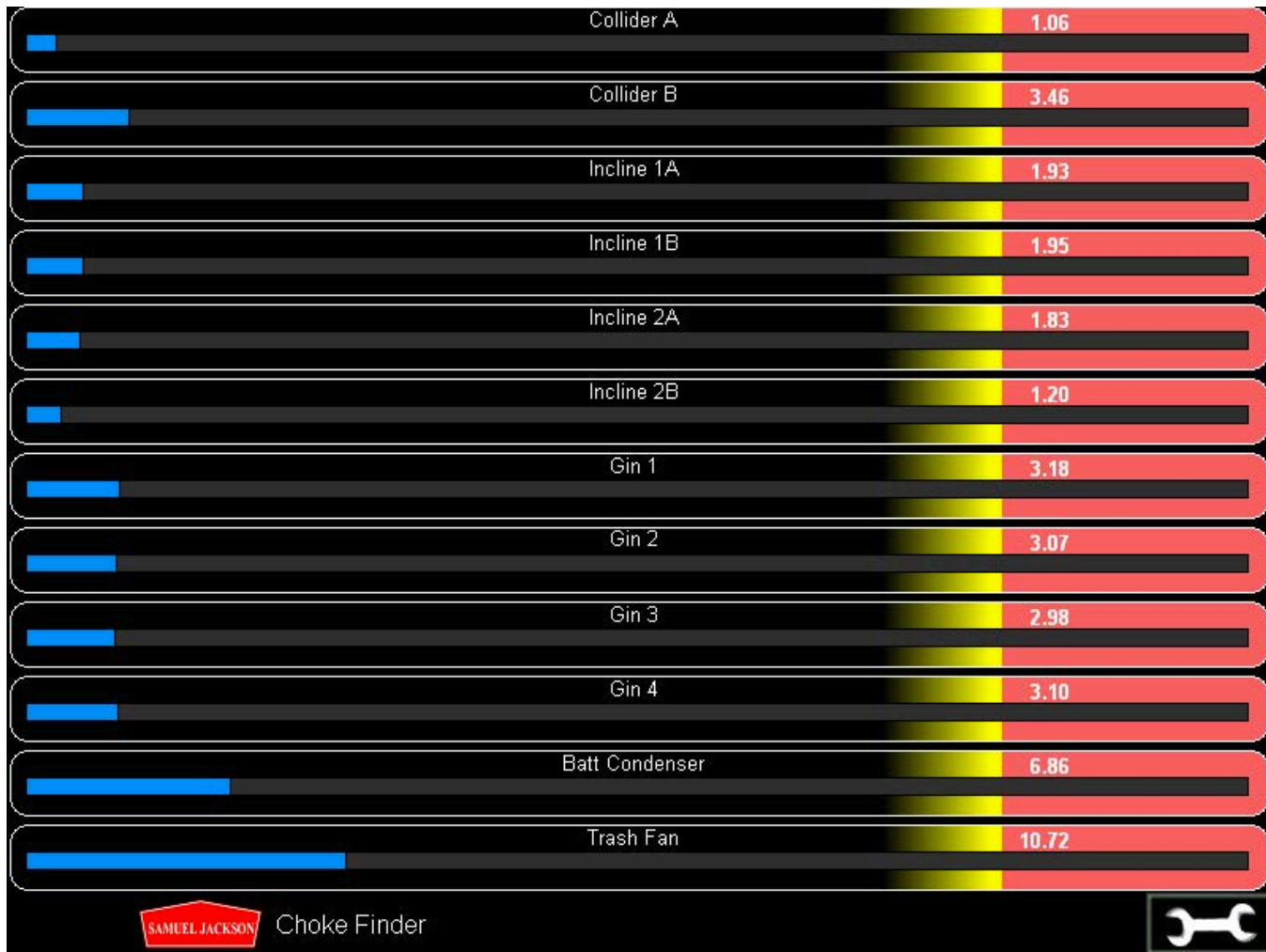


Air Tools Pressure Transducer.



The inside view of
the Static Pressure Port.

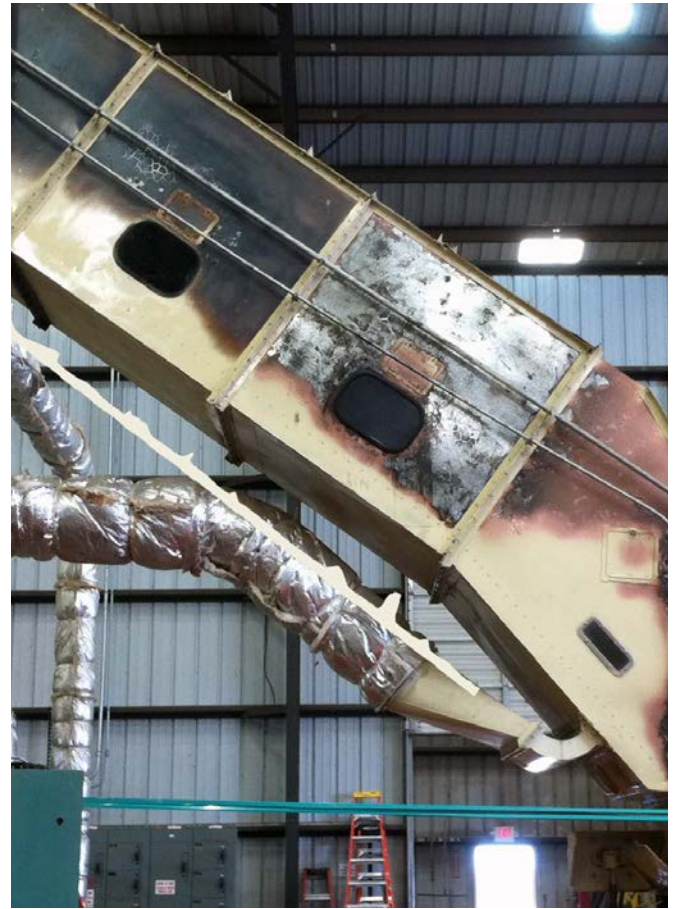
CHOKE FINDER



ARGUS



A single 23400A Argus 535
Infrared Spark Detector.

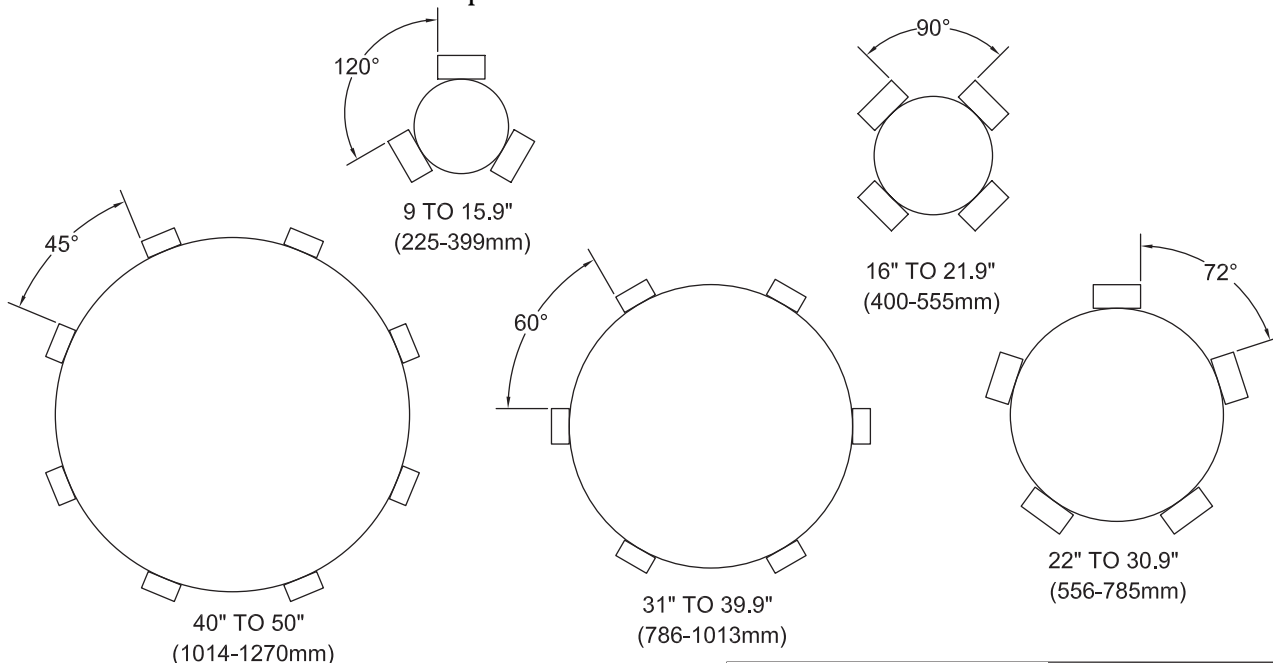


RECOMMENDED NUMBER OF ARGUS DETECTORS

Zone Description		Pipe Diameter	Number of Detectors
1			
2			
3			
4			
5			
6			
7			
8			
9			
10			

11			
12			
13			
14			
15			
16			
17			
18			
19			
20			

Note: 10 or 20 zones maximum on one Argus panel (dependent on model)
Maximum of 60 or 120 detectors total on one panel (dependent on model)
Maximum of 14 detectors per zone.



GINSPIRE

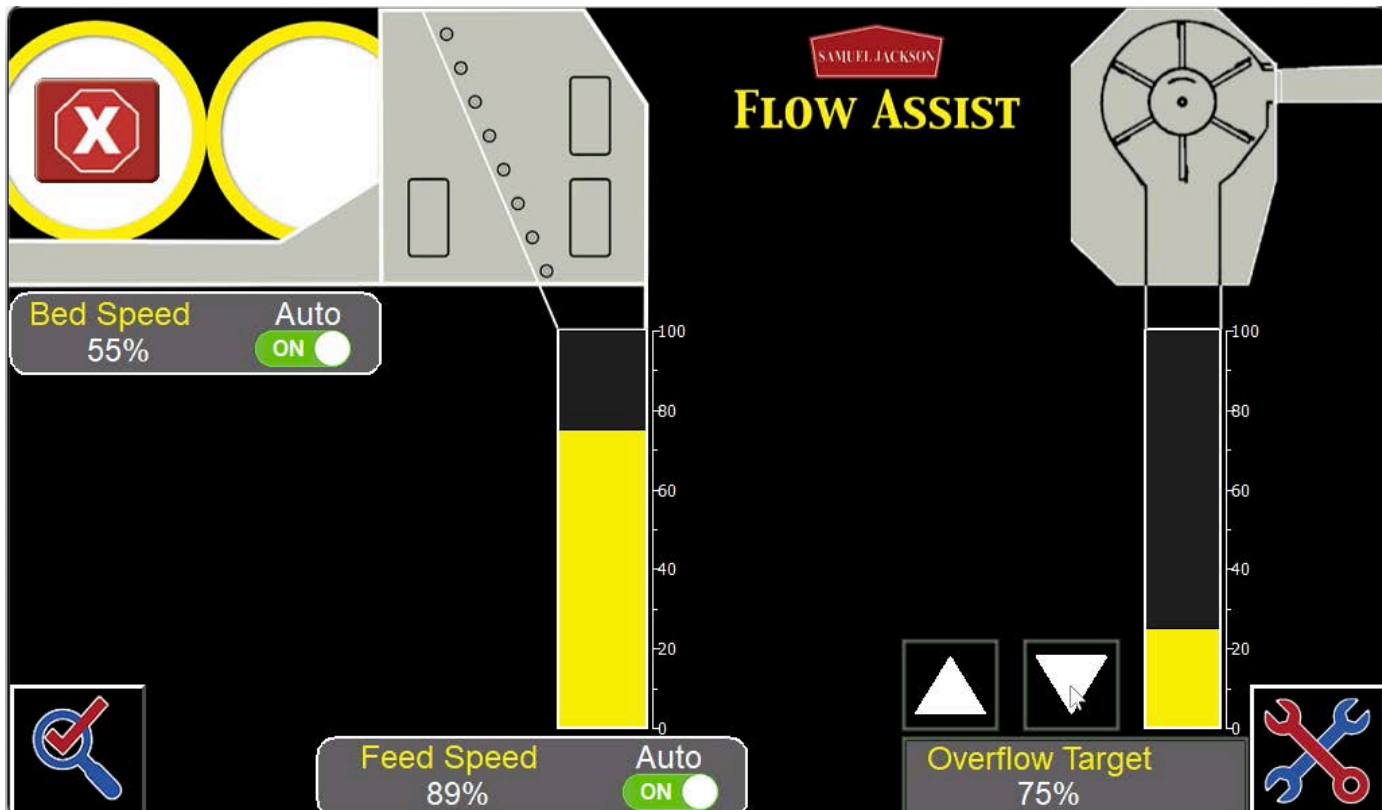


Ginspire provides:

- Logging of individual alarm events
- Text message alert capabilities
- Enhanced system diagnostics



Flow Assist



WANTED: Ginner's Assistant. Talented, never misses work, no housing, overtime or a bale bonus provided. SERIOUS INQUIRES ONLY.

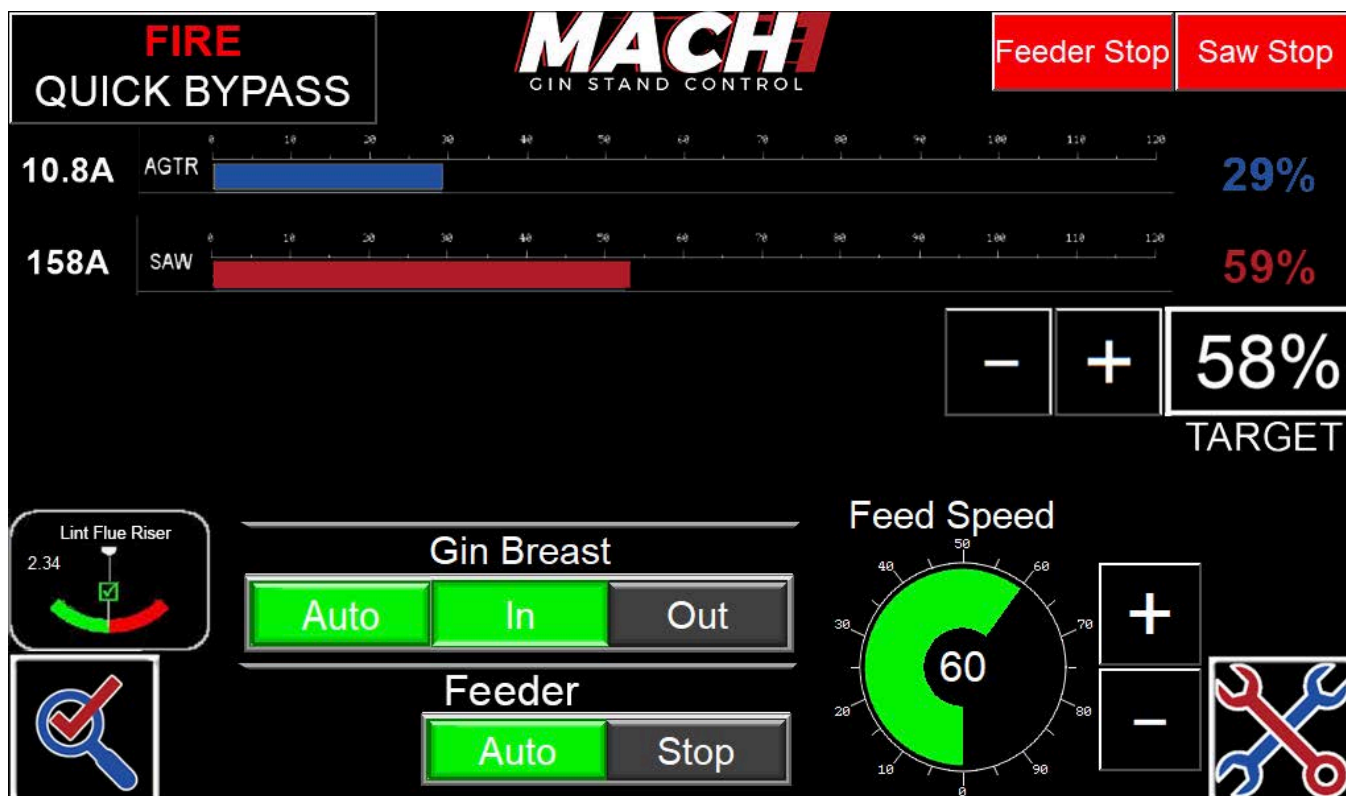
May we introduce

SAMUEL JACKSON

FLOW ASSIST



GIN STAND CONTROLS



**5-20%
Faster Ginning**

Proven Results to Date:

- 8 Gin Installs
- 21 Faster Gin Stands

PROVEN ON: Lummus | Consolidated | BC Supply | Cherokee

CLEAR, EASY TO UNDERSTAND ERRORS AND ALARMS

INCLUDES AGITATOR VFD AND FEEDWORKS VFD

PREVENT CHOKES AND BACKLASHES WITH FULL AIR
MONITORING:

GIN HOOD / SHORT FLUE
LINT CLEANER A INLET, OUTLET, EXHAUST
LINT CLEANER B INLET, OUTLET, EXHAUST
LINT FLUE RISER



Lummus 12' Centurion with Mach 1 controls

MACH-1

GIN STAND CONTROL



Gin Stand Control Home Screen



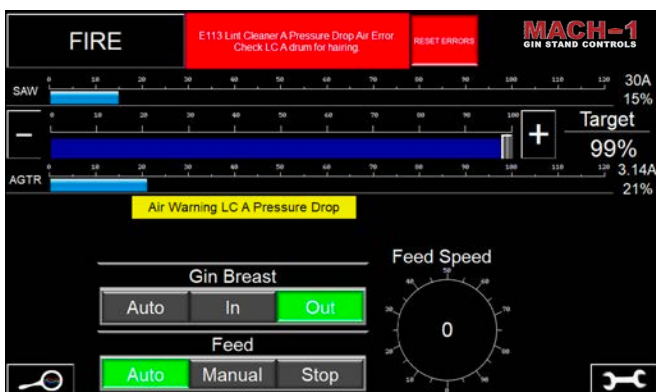
Lummus 234



Master Console Control



BC 170



Easy to understand alarm messages



Cherokee 193

