

Model HU-80-1545 “Sahara Lite” Oil-Fired Humidaire Unit (Product Overview and Specifications)



Control cabinet, spray chamber, and tank



Industrial oil-fired burner



Fuel valve train and water metering

Built upon some of the most powerful features of the Humidaire Sahara, the HU-80-1545 “Sahara Lite” brings powerful moist air technology into the range of gins with smaller capacities and budgets. With 50% more evaporative capacity than its HU-60 predecessors, it quickly becomes obvious that this is a powerful player among moist air generators.

Other features include:

Direct fire and water interaction. Hot, dry afternoon conditions in ginning season do not slow this unit down like normal Humidaire Units.

Access to the water tank during operation. No more stopping to check water and scale conditions.

Heat comes from burning kerosene or diesel fuel. Enjoy saving 230 Btus for every pound of water evaporated using the Sahara Lite.

The water pump is outside the cabinet. This keeps the pump motor running cooler and is easy to access for maintenance.

Color touch screen controls with full compatibility with Moisture Mirror II and III for fully automatic control and easy wiring and troubleshooting.

Real time water evaporation statistics. We make big claims about the evaporative capacity of the Sahara Lite. Don't just take our word for it, watch it in real time during operation during your toughest ginning conditions.

Compatibility with the Hot Air Mix Valve for gins that do not have independent heat available for their Steamrollers or condensers.

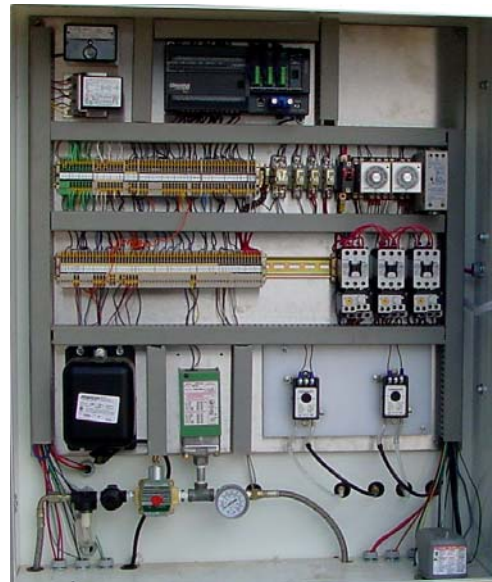


Specifications for HU-80-1545 “Sahara Lite”

Evaporation capacity (max):	3 US gallons/minute
Evaporation capacity (typical):	2 US gallons/minute
Fresh water supply requirement:	5 US gallons/minute
Compressed air required:	Yes
Maximum moist air CFM:	4,000 CFM
Heating efficiency:	1170 Btu/pound H2O evap
Water purge rate (typical):	.6 US gallons/minute
Std Electrical power configurations:	480/60, 380/50, 415/50
Fuel requirement:	Kerosene (preferred for long life) or diesel.
Maximum burner input:	2 million Btu/hr.
Typical burner input:	900,000 Btu/hr.
Fuel consumption (max):	15.4 US gal/hour.
Fuel consumption (typical):	6.9 US gal/hour.
Remote control compatibility:	Moisture Mirror II/III
16920 Hot Air Valve Compatible:	Yes
Access water tank during operation:	Yes
Water pump motor:	5 HP
Water temperature graph (real time):	Yes
Water evaporation graph (real time):	Yes
Error/Alarm history:	FIFO, 500 events, date/time
Touch Screen update utility:	USB key
Water tank/nozzles/piping materials:	Stainless steel



Stainless cover slides back to reveal water tank. Float valve is contained in waveless chamber. Window provides view of spray and flame interaction during operation.



Solid state controls with a color touch screen (not pictured) provide the operator with friendly controls to handle sophisticated functions.



SAMUEL JACKSON, INCORPORATED

Lubbock, TX USA / Tel: 806-795-5218 / Fax: 806-795-8240 / www.samjackson.com