

Model HU-SAHARA-1490 Oil-Fired Humidaire Unit (Product Overview and Specifications)



Humidaire Sahara is the most powerful moist air generator ever designed and built for cotton ginning. It is capable of vaporizing over 4 US gallons of cool water into heated water vapor at 150 F every 60 seconds at maximum output. At the same time, the design offers stable operation at very low evaporation levels.

The Sahara is the most fuel efficient oil-fired unit ever developed, trimming over 17% off of the normal energy needed by conventional oil-fired Humidaire Units. Think of the Sahara like a race car that offers the fuel savings of an economy car.

Other features include:

Direct fire and water interaction. Hot, dry afternoon conditions in ginning season do not slow this unit down like normal Humidaire Units.

Access to the water tank from both sides during operation. No more stopping to check water and scale conditions.

Heat comes from burning kerosene or diesel fuel. Enjoy saving 240 Btus for every pound of water evaporated using the Sahara.

A 7-1/2 HP, cast stainless water pump offers unmatched performance.

A built-in hydrocyclone water filter eliminates dirt and fiber particles in the spray chamber and tank. It cleans itself automatically.

Real time water evaporation statistics. We make big claims about the evaporative capacity of the Sahara. Don't just take our word for it, watch it in real time during operation during your toughest ginning conditions.



Hydrocyclone filter keeps water tank clean



7-1/2 HP cast stainless pump delivers performance



SAMUEL JACKSON, INCORPORATED

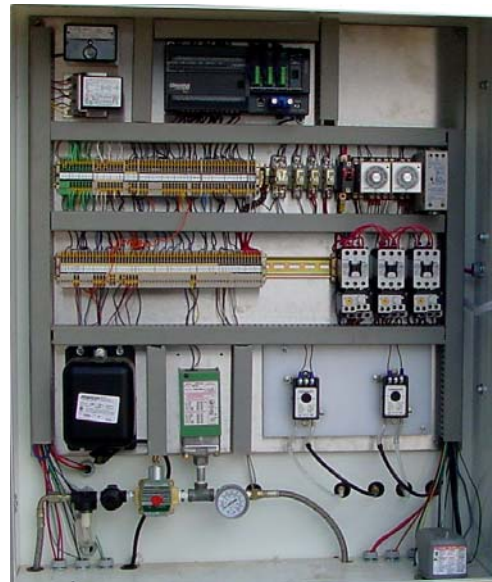
Lubbock, TX USA / Tel: 806-795-5218 / Fax: 806-795-8240 / www.samjackson.com

Specifications for HU-SAHARA-1490

Evaporation capacity (max):	4 US gallons/minute
Evaporation capacity (typical):	3 US gallons/minute
Fresh water supply requirement:	7 US gallons/minute
Compressed air required:	Yes
Maximum moist air CFM:	5,000 CFM
Heating efficiency:	1160 Btu/pound H2O evap
Water purge rate (typical):	.7 US gallons/minute
Std Electrical power configurations:	480/60, 380/50, 415/50
Fuel requirement:	Kerosene (preferred for long life) or diesel.
Maximum burner input:	2.5 million Btu/hr.
Typical burner input:	1.5 million Btu/hr.
Fuel consumption (max):	19.2 US gal/hour.
Fuel consumption (typical):	11.5 US gal/hour.
Remote control compatibility:	Moisture Mirror II/III
16920 Hot Air Valve Compatible:	No
Access water tank during operation:	Yes
Water pump motor:	7.5 HP
Water temperature graph (real time):	Yes
Water evaporation graph (real time):	Yes
Error/Alarm history:	FIFO, 500 events, date/time
Touch Screen update utility:	USB key
Water tank/nozzles/piping materials:	Stainless steel



Fire and water combine in this view through the windows of the Sahara at maximum output. More than 4 gal/min evaporation is possible for extreme ginning conditions.



Solid state controls with a color touch screen (not pictured) provide the operator with friendly controls to handle sophisticated functions.



SAMUEL JACKSON, INCORPORATED

Lubbock, TX USA / Tel: 806-795-5218 / Fax: 806-795-8240 / www.samjackson.com